



PLAN # BDS 13-19



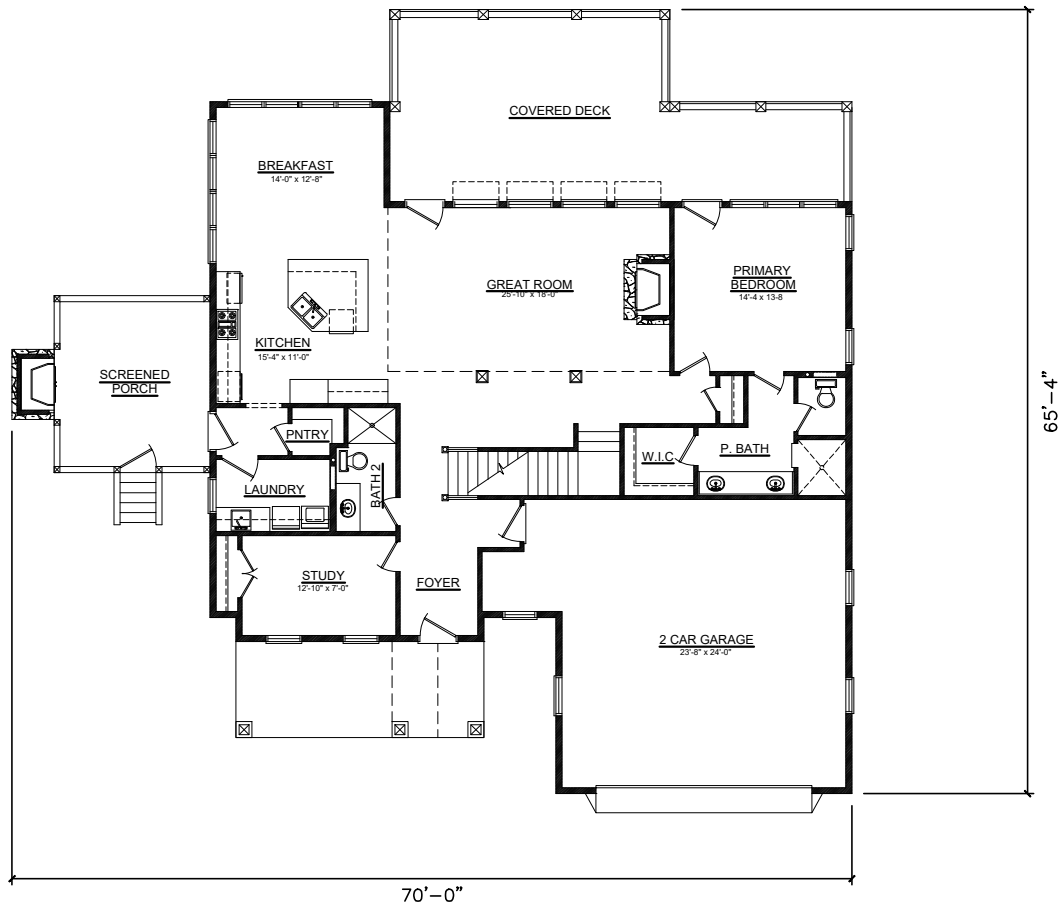
HOUSE PLAN SPECIFICATIONS				EXTRA DETAILS AND SPECIAL INFORMATION			
BEDROOMS:	3	FIRST FLOOR:	1,733	ISOLATED PRIMARY SUITE, STUDY, COV. REAR DECK SCREENED-IN PORCH, BREAKFAST NOOK, LARGE REC. ROOM, SHOP, AND SAFE ROOM			
BATHS:	5	SECOND FLOOR:	902				
STORIES :	3	BASEMENT:	555				
GARAGE :	2 car	TOTAL HEATED SQFT:	3,190				
FINISH:	SIDING	TOTAL UNDER ROOF	4,505				
FOUNDATION:	SLAB	OVERALL DIMENSIONS:					
WALL STRUCTURE:	2 X 4	WIDTH:	70'-0"				
HOUSE STYLE:	TRADITIONAL	DEPTH:	65'-4"				

* CHANGES TO WALL STRUCTURE, FOUNDATION TYPE, AND EXTERIOR ARE AVAILABLE AT AN ADDITIONAL COST

BUTCHER DRAFTING SERVICE, LLC



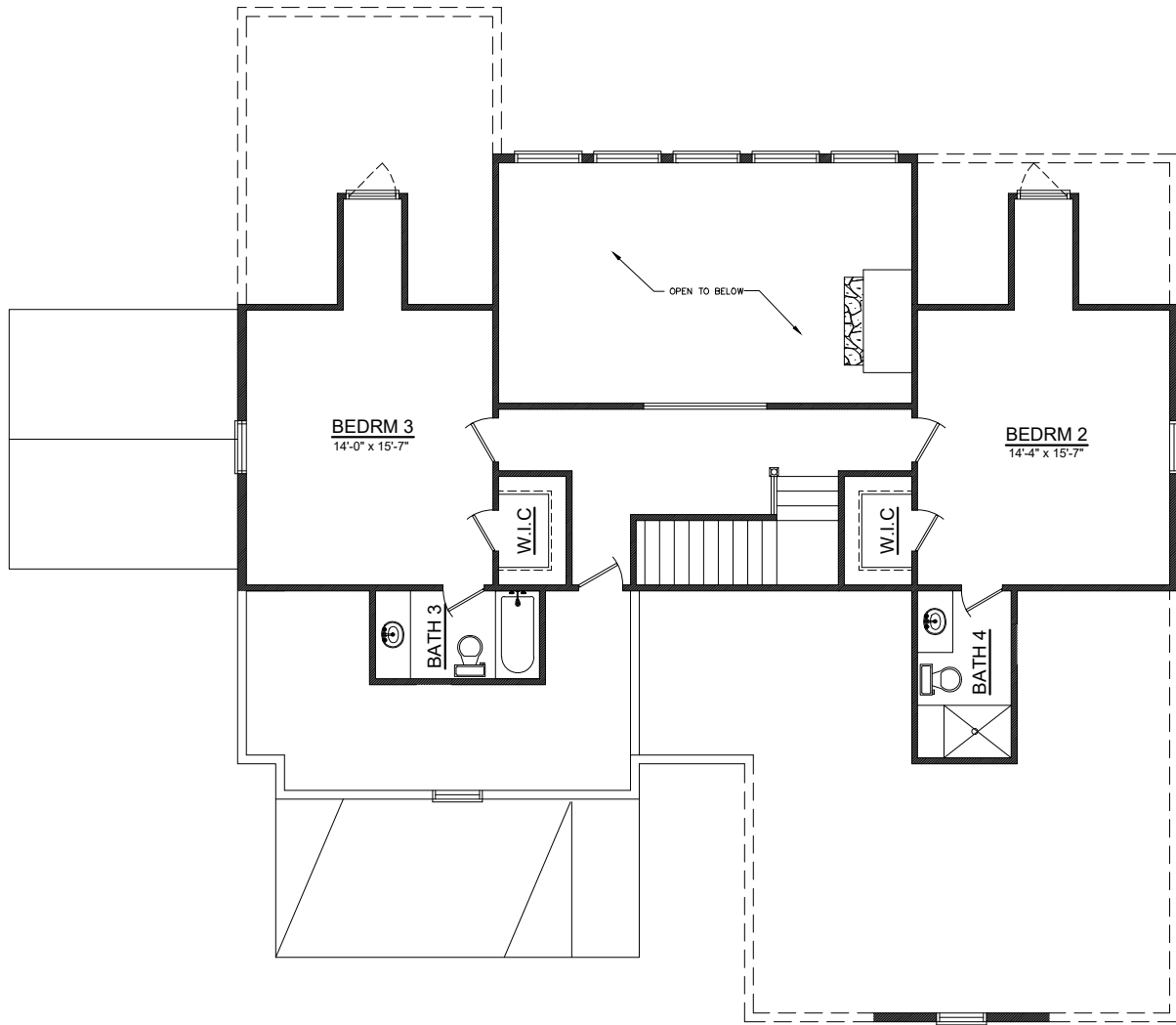
PLAN # BDS 13-19



BUTCHER DRAFTING SERVICE, LLC



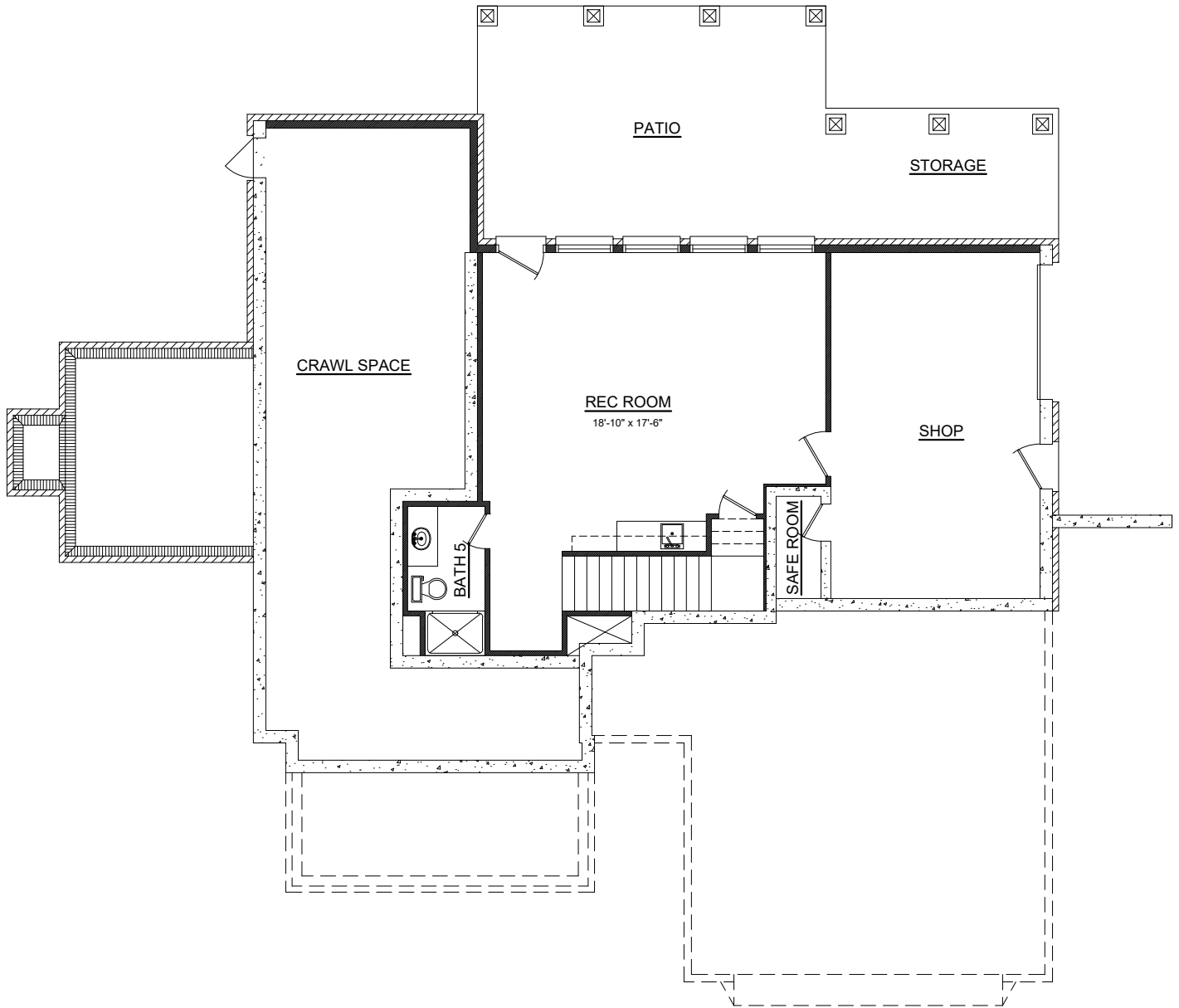
PLAN # BDS 13-19



BUTCHER DRAFTING SERVICE, LLC



PLAN # BDS 13-19



BUTCHER DRAFTING SERVICE, LLC