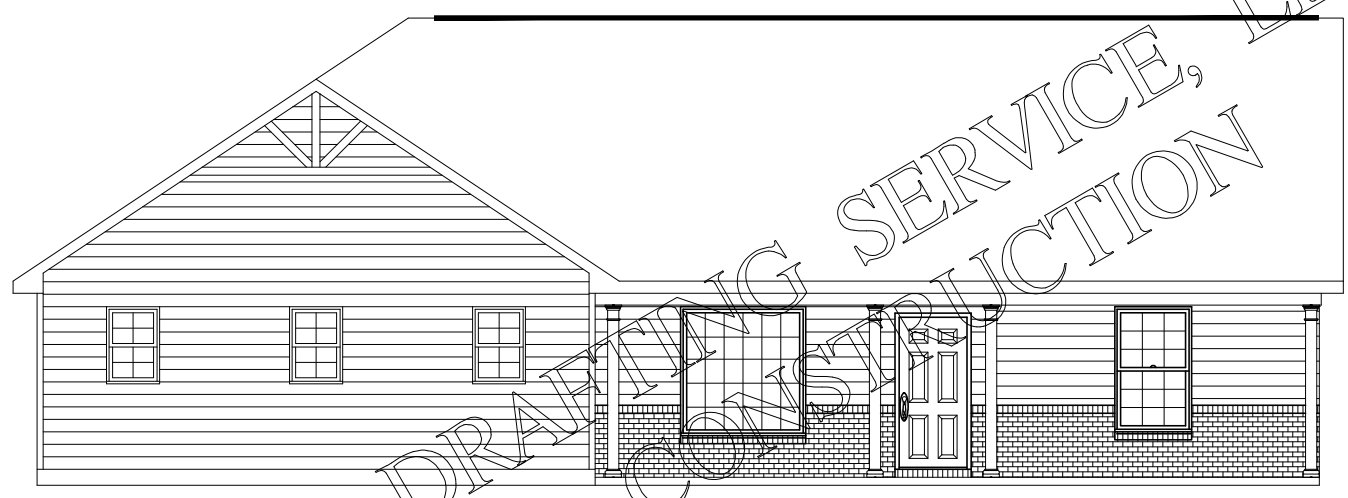




BDS 13-32



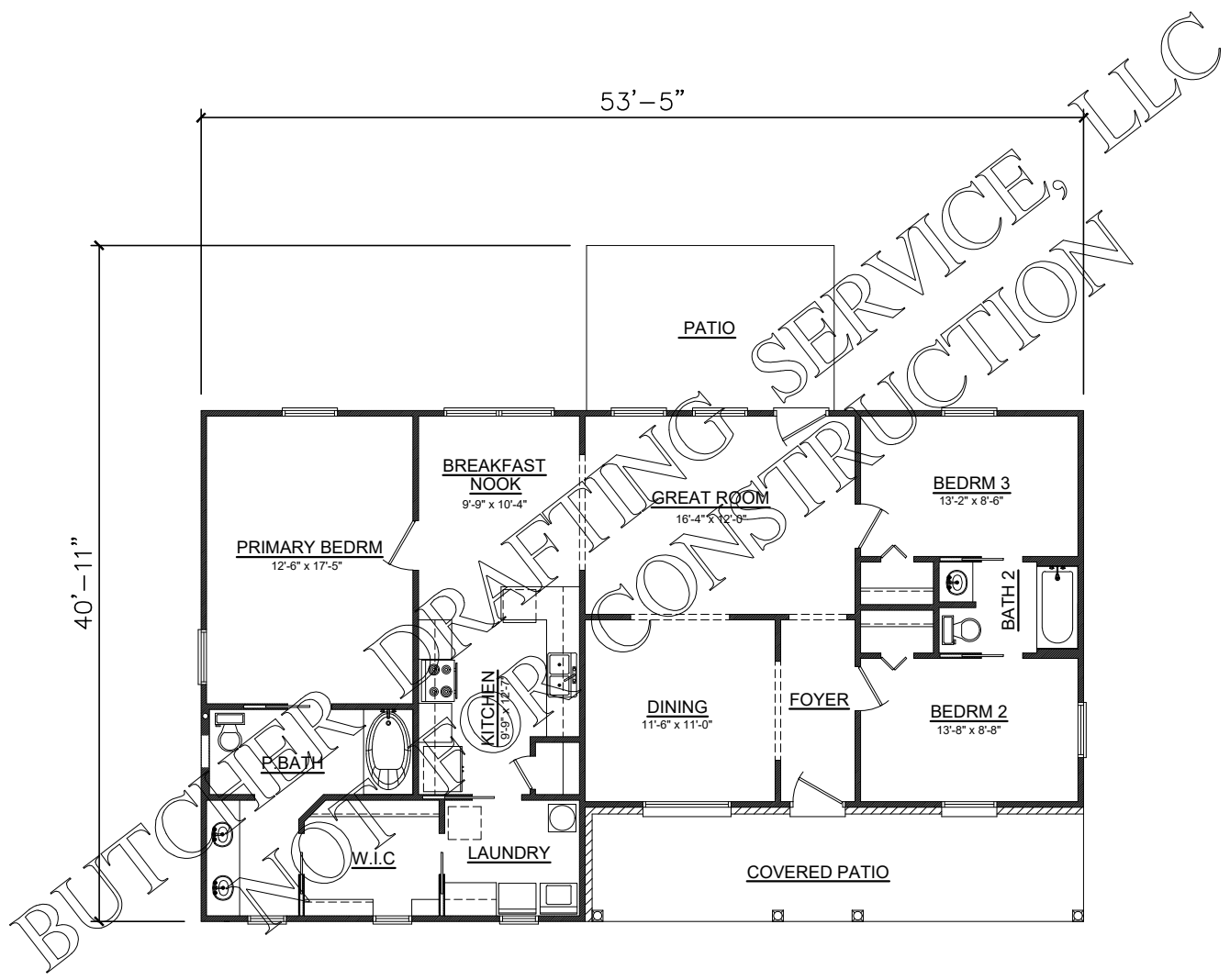
HOUSE PLAN SPECIFICATIONS				EXTRA DETAILS AND SPECIAL INFORMATION
BEDROOMS:	3	FIRST FLOOR:	1,443	LARGE FRONT PORCH, ISOLATED PRIMARY SUITE
BATHS:	2	SECOND FLOOR:	N/A	
STORIES :	1	BASEMENT:	N/A	
GARAGE :	N/A	TOTAL HEATED SQFT:	1,443	
FINISH:	SIDING	TOTAL UNDER ROOF	1,652	
FOUNDATION:	SLAB	OVERALL DIMENSIONS:		
WALL STRUCTURE:	2 X 4	WIDTH:	53'-5"	
HOUSE STYLE:	CRAFTSMAN	DEPTH:	40'-11"	

* CHANGES TO WALL STRUCTURE, FOUNDATION TYPE, AND EXTERIOR ARE AVAILABLE AT AN ADDITIONAL COST

BUTCHER DRAFTING SERVICE, LLC



BDS 13-32



BUTCHER DRAFTING SERVICE, LLC