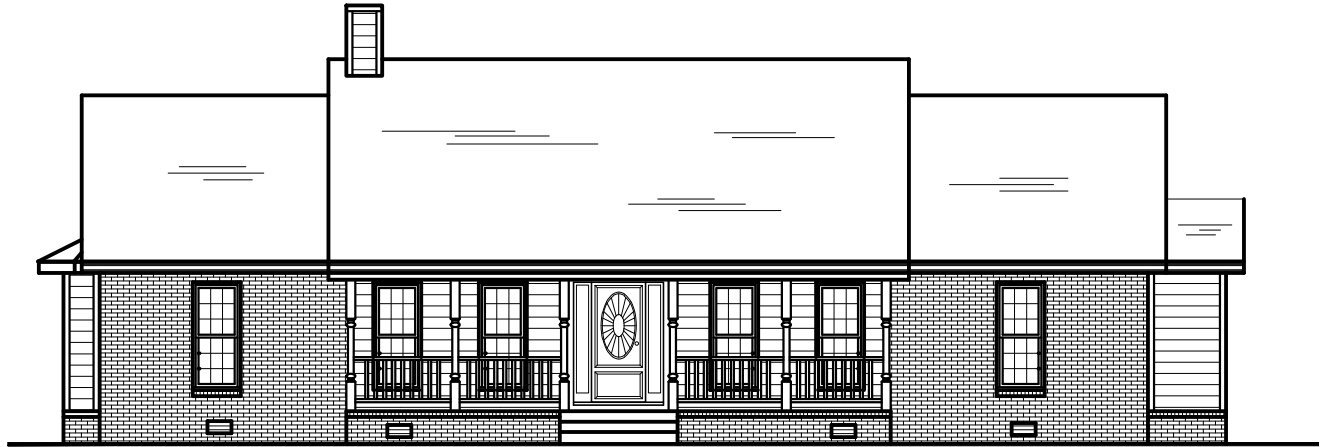




PLAN # BDS 99-103



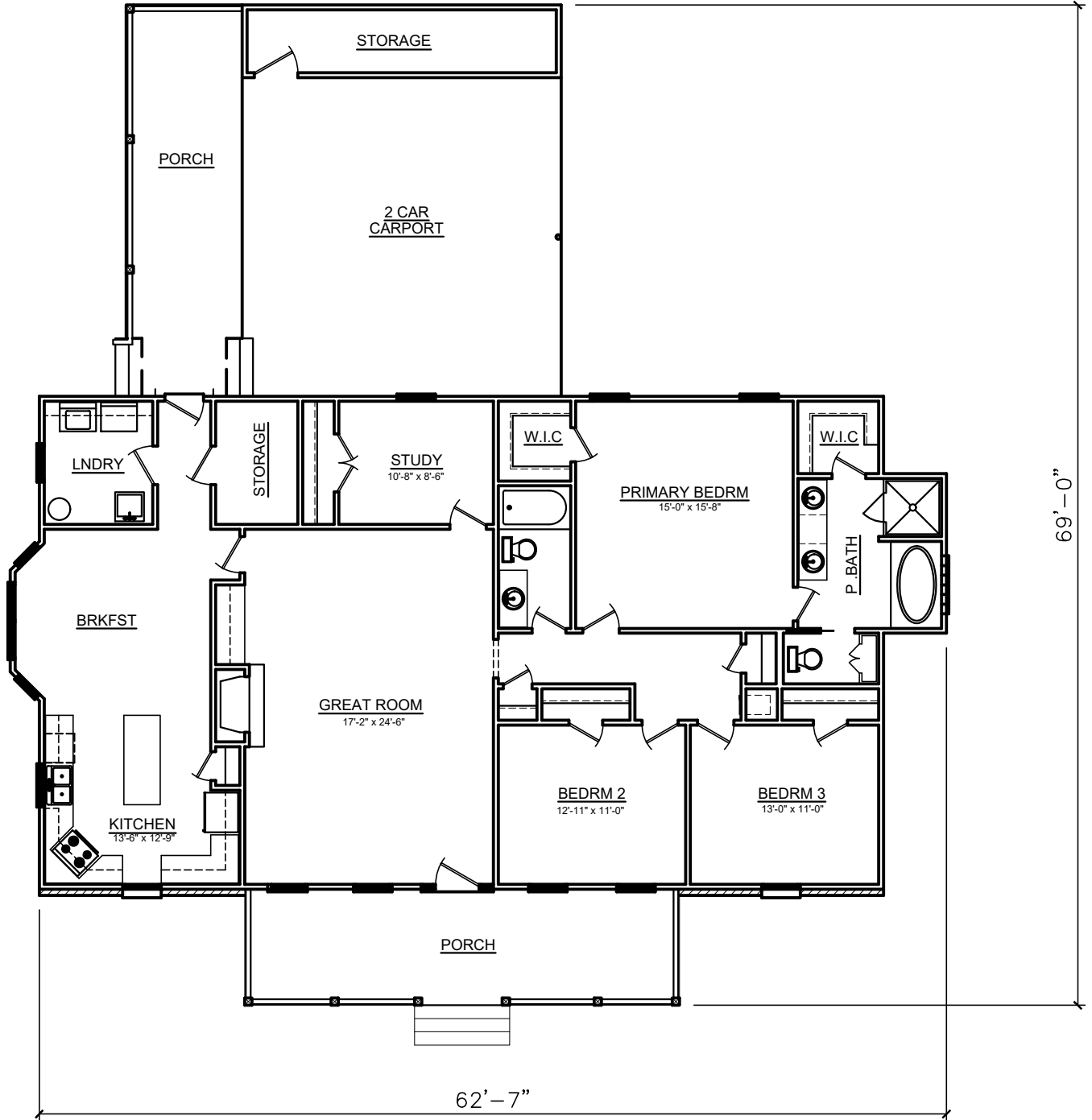
HOUSE PLAN SPECIFICATIONS				EXTRA DETAILS AND SPECIAL INFORMATION	
BEDROOMS:	3	FIRST FLOOR:	2,059	HEATED/COOLED STORAGE, SIDE ENTRY CARPORT, ISOLATED PRIMARY SUITE, BREAKFAST NOOK	
BATHS:	2.5	SECOND FLOOR:	N/A		
STORIES :	1	BASEMENT:	N/A		
GARAGE :	N/A	TOTAL HEATED SQFT:	2,059		
FINISH:	BRICK	TOTAL UNDER ROOF	3,109		
FOUNDATION:	SLAB	OVERALL DIMENSIONS:			
WALL STRUCTURE:	2 X 4	WIDTH:	62'-7"		
HOUSE STYLE:	TRADITIONAL	DEPTH:	69'-0"		

* CHANGES TO WALL STRUCTURE, FOUNDATION TYPE, AND EXTERIOR ARE AVAILABLE AT AN ADDITIONAL COST

BUTCHER DRAFTING SERVICE, LLC



PLAN # BDS 99-103



BUTCHER DRAFTING SERVICE, LLC