



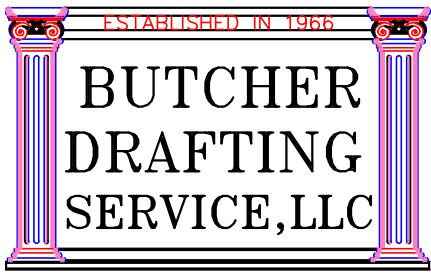
PLAN # BDS 20-06



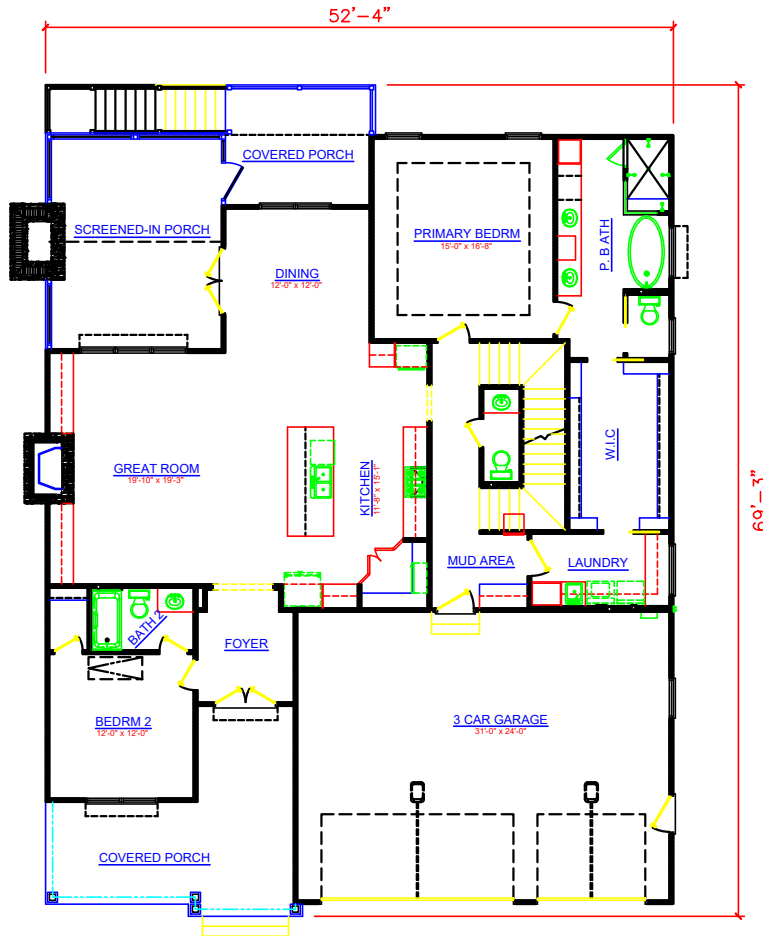
HOUSE PLAN SPECIFICATIONS				EXTRA DETAILS AND SPECIAL INFORMATION	
BEDROOMS:	3	FIRST FLOOR:	2,013	ISOLATED PRIMARY SUITE, UNFINISHED BASEMENT STORM SHELTER.	
BATHS:	3	SECOND FLOOR:	669		
STORIES :	3	BASEMENT:	UNHEATED		
GARAGE :	2 car	TOTAL HEATED SQFT:	2,682		
FINISH:	VINYL	TOTAL UNDER ROOF	6,121		
FOUNDATION:	SLAB	OVERALL DIMENSIONS:			
WALL STRUCTURE:	2 X 4	WIDTH:	52'-4"		
HOUSE STYLE:	CAPE COD	DEPTH:	69'-3"		

* CHANGES TO WALL STRUCTURE, FOUNDATION TYPE, AND EXTERIOR ARE AVAILABLE AT AN ADDITIONAL COST

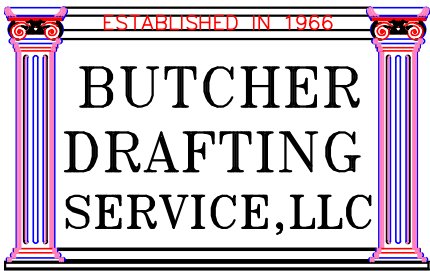
BUTCHER DRAFTING SERVICE, LLC



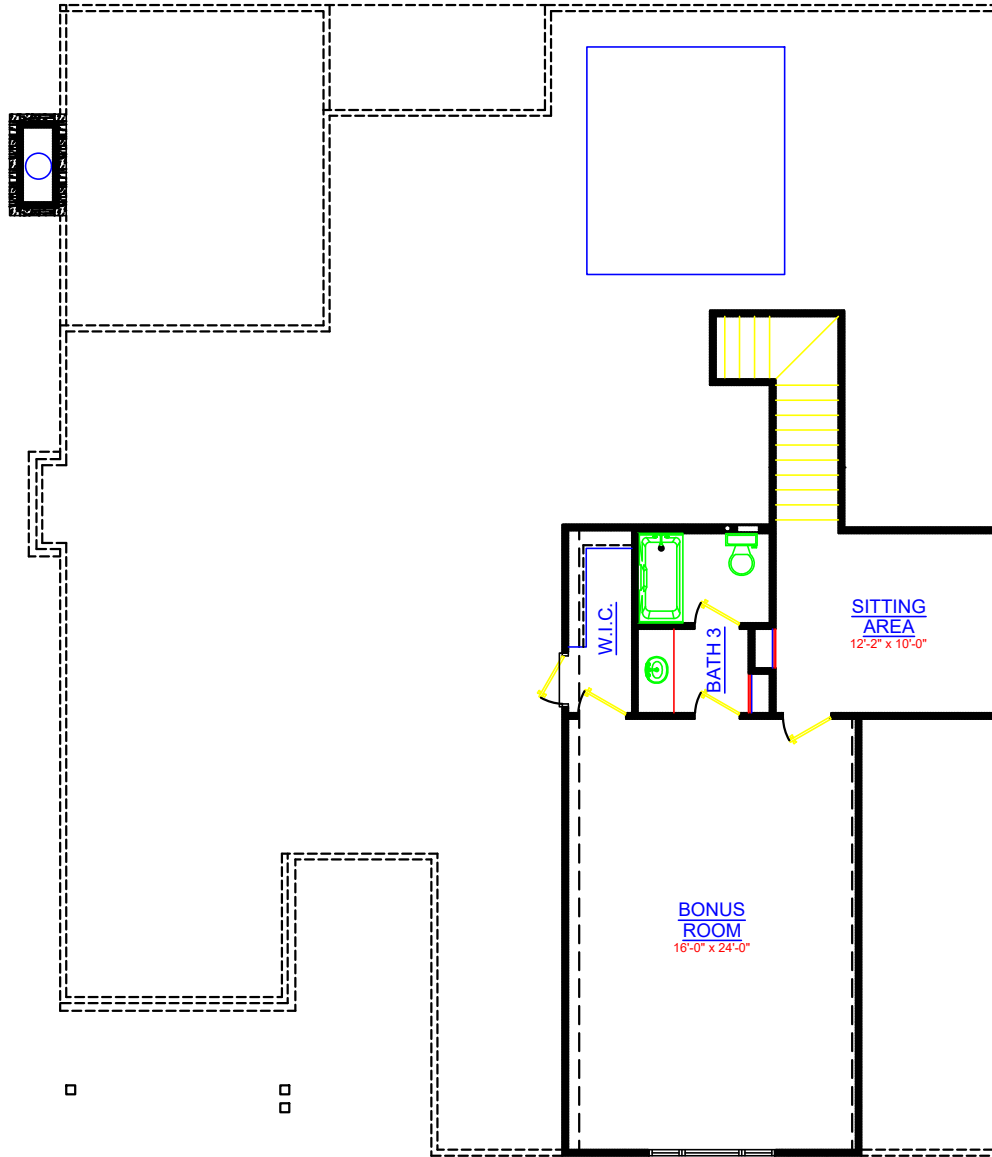
PLAN # BDS 20-06



BUTCHER DRAFTING SERVICE, LLC



PLAN # BDS 20-06

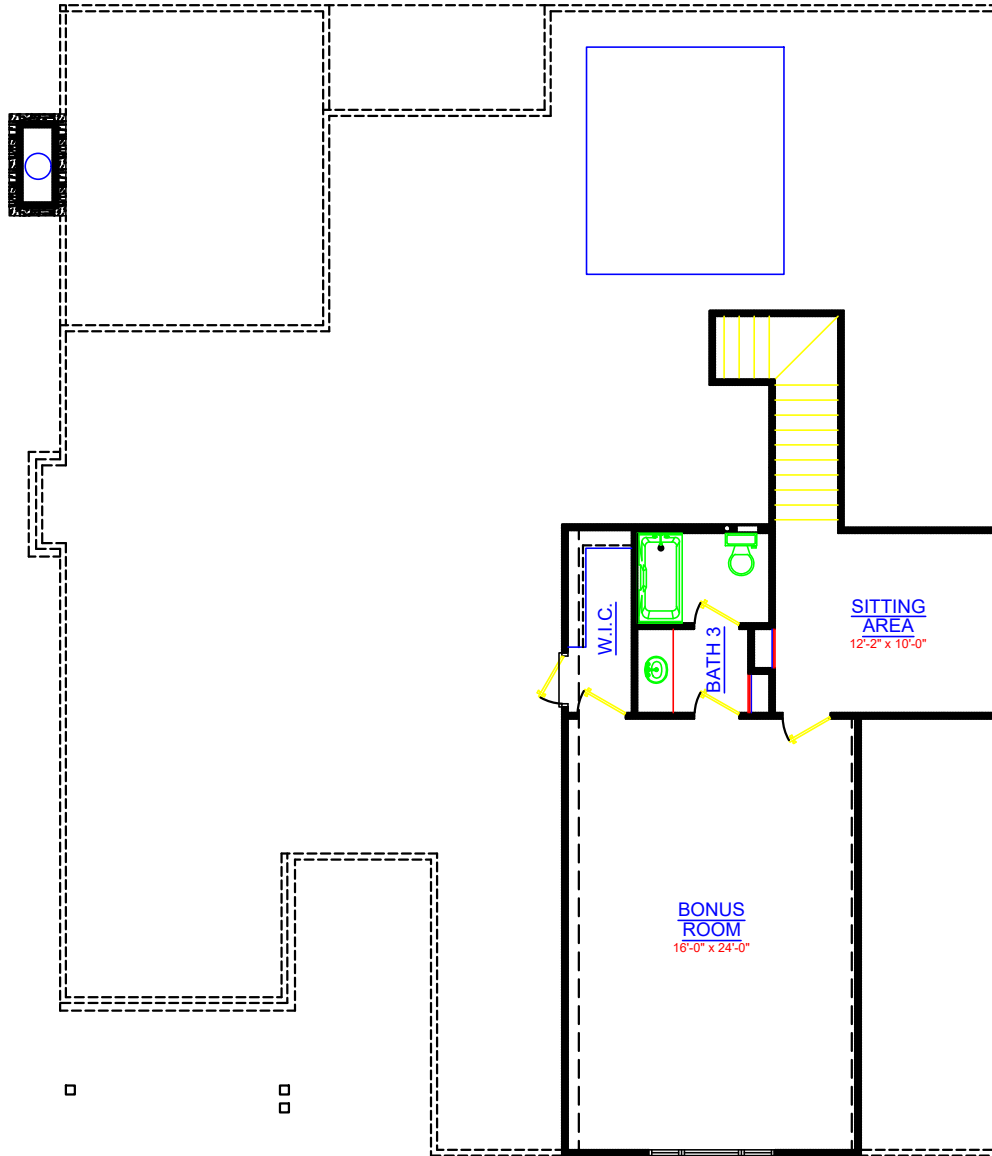


PRIMARY SUITE OPTION

BUTCHER DRAFTING SERVICE, LLC



PLAN # BDS 20-06



BUTCHER DRAFTING SERVICE, LLC