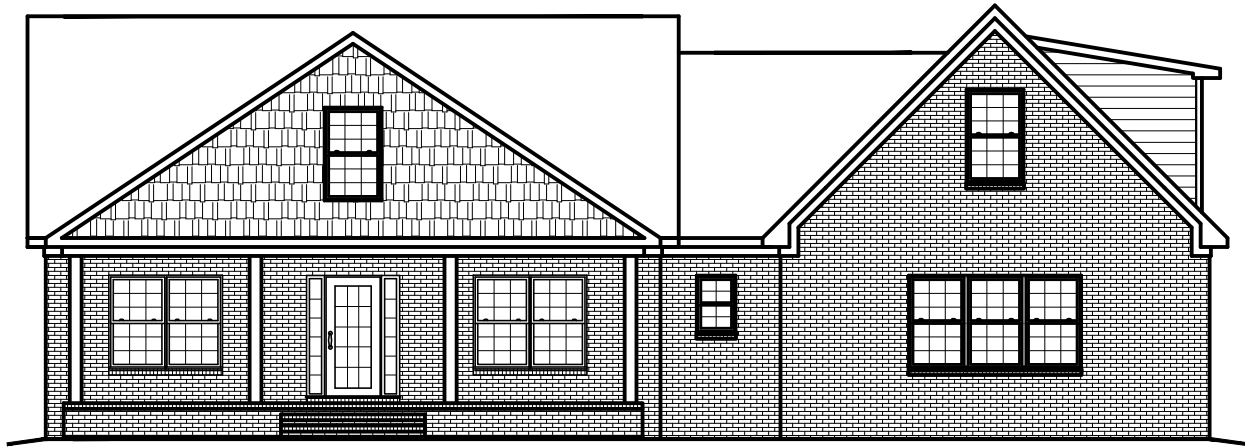




PLAN # BDS 20-19



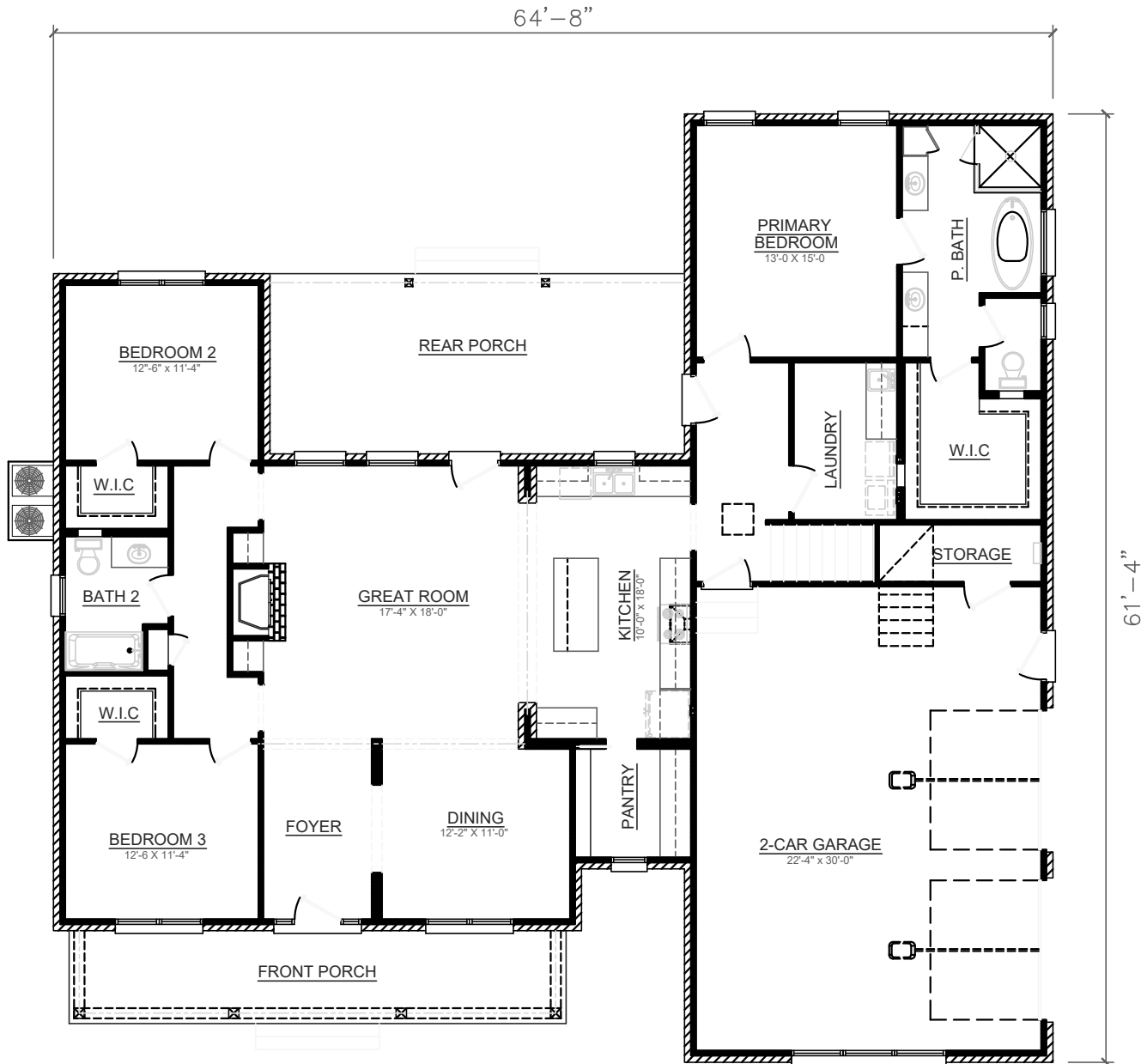
HOUSE PLAN SPECIFICATIONS				EXTRA DETAILS AND SPECIAL INFORMATION	
BEDROOMS:	3	FIRST FLOOR:	2,093	OPEN FLOOR PLAN, BONUS ROOM, LARGE PANTRY & PORCHES.	
BATHS:	2	SECOND FLOOR:	486		
STORIES :	1	BASEMENT:	N/A		
GARAGE :	2 car	TOTAL HEATED SQFT:	2,579		
FINISH:	VARIES	TOTAL UNDER ROOF	3,849		
FOUNDATION:	SLAB	OVERALL DIMENSIONS:			
WALL STRUCTURE:	2 X 4	WIDTH:	64'-8"		
HOUSE STYLE:	CRAFTSMAN	DEPTH:	61'-4"		

* CHANGES TO WALL STRUCTURE, FOUNDATION TYPE, AND EXTERIOR ARE AVAILABLE AT AN ADDITIONAL COST

BUTCHER DRAFTING SERVICE, LLC



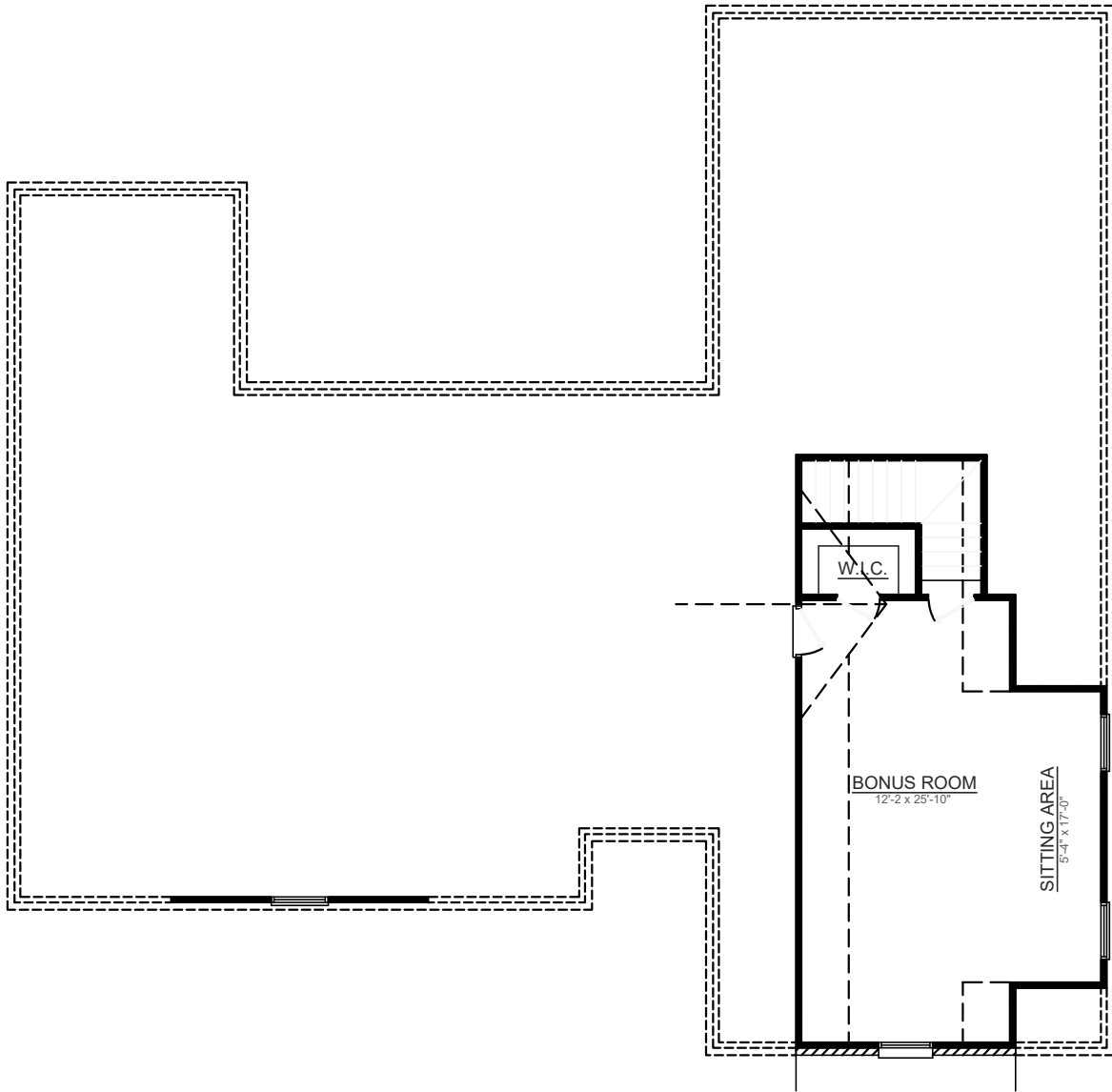
PLAN # BDS 20-19



BUTCHER DRAFTING SERVICE, LLC



PLAN # BDS 20-19



BUTCHER DRAFTING SERVICE, LLC