

Established 1966

**BUTCHER
DRAFTING
SERVICE, LLC**

www.butcherdrafting.com

PLAN # BDS 20-207



HOUSE PLAN SPECIFICATIONS				EXTRA DETAILS AND SPECIAL INFORMATION
BEDROOMS:	5	FIRST FLOOR:	2,195	ISOLATED PRIMARY SUITE, LARGE ENTRY FOYER, EAT-IN KITCHEN, COVERED AND UNCOVERED DECK SECTIONS
BATHS:	1.5	SECOND FLOOR:	N/A	
STORIES :	1	BASEMENT:	N/A	
GARAGE :	2 car	TOTAL HEATED SQFT:	2,195	
FINISH:	VARIES	TOTAL UNDER ROOF	3,255	
FOUNDATION:	CRAWL	OVERALL DIMENSIONS:		
WALL STRUCTURE:	2 X 4	WIDTH:	71'-2"	
HOUSE STYLE:	MODERN FARMHOUSE	DEPTH:	49'-5"	

* CHANGES TO WALL STRUCTURE, FOUNDATION TYPE, AND EXTERIOR ARE AVAILABLE AT AN ADDITIONAL COST

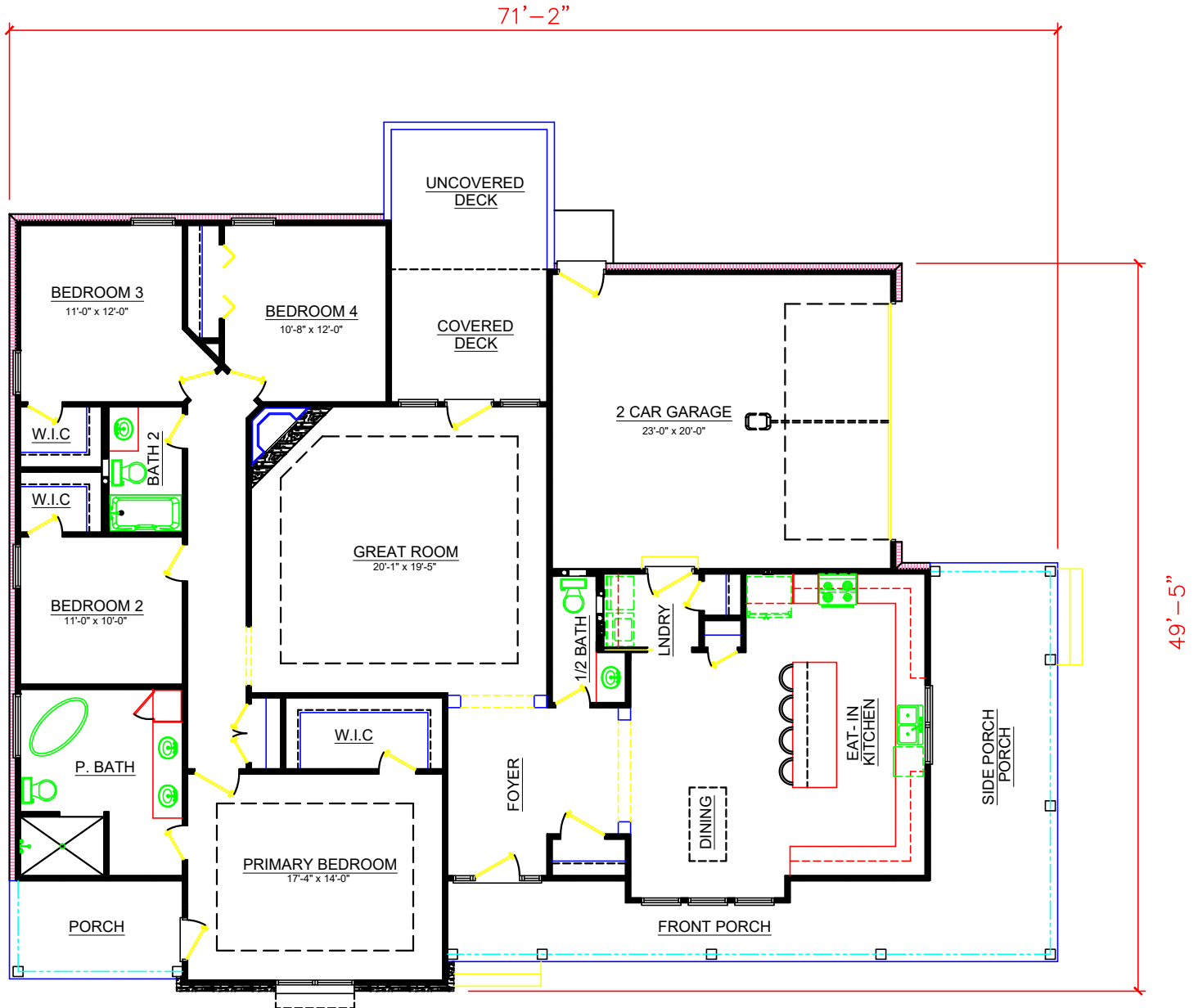
BUTCHER DRAFTING SERVICE, LLC

Established 1966

**BUTCHER
DRAFTING
SERVICE, LLC**

www.butcherdrafting.com

PLAN # BDS 20-207



BUTCHER DRAFTING SERVICE, LLC