



PLAN # BDS 20-38



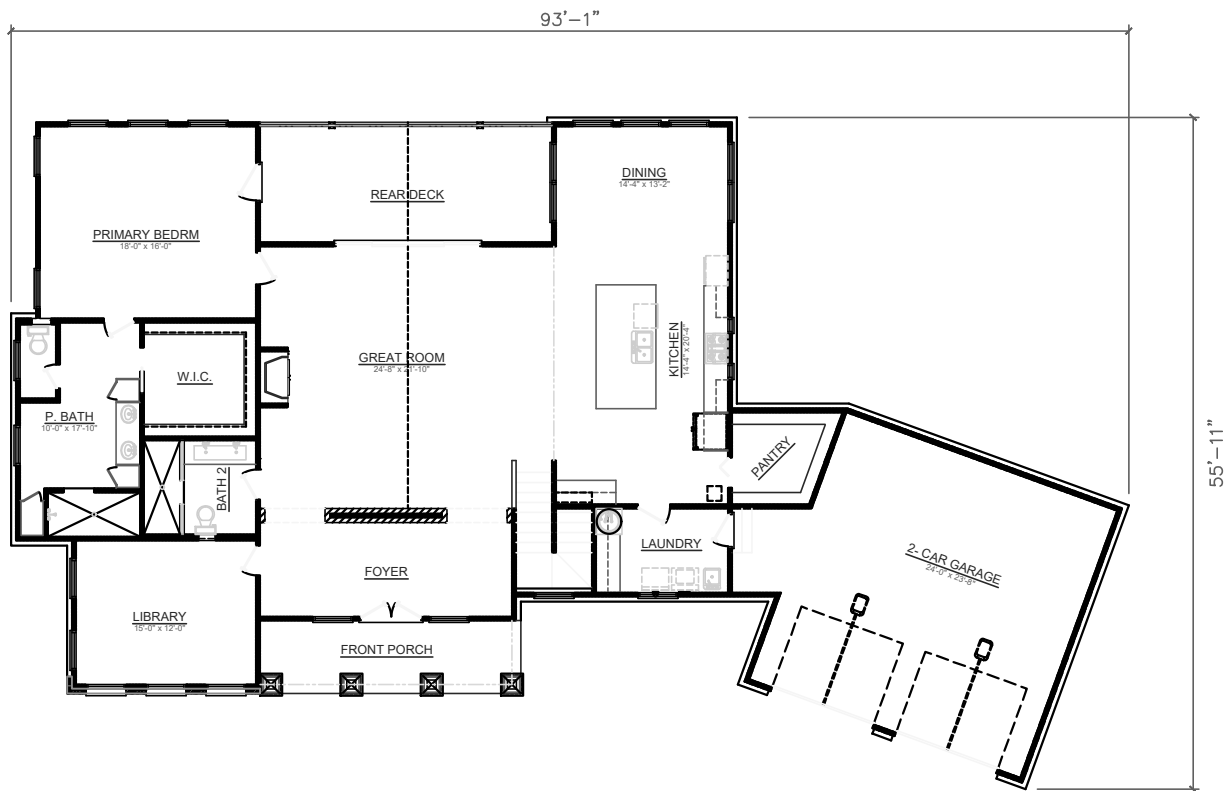
HOUSE PLAN SPECIFICATIONS				EXTRA DETAILS AND SPECIAL INFORMATION
BEDROOMS:	3	FIRST FLOOR:	2,302	OPEN PLAN, LARGE PORCHES, STORAGE SPACE, LIBRARY.
BATHS:	3	SECOND FLOOR:	N/A	
STORIES :	1.5	BASEMENT:	1,489	
GARAGE :	2 car	TOTAL HEATED SQFT:	3,791	
FINISH:	SIDING	TOTAL UNDER ROOF	5,052	
FOUNDATION:	CRAWL	OVERALL DIMENSIONS:		
WALL STRUCTURE:	2 X 4	WIDTH:	93'-1"	
HOUSE STYLE:	CRAFTSMAN	DEPTH:	55'-11"	

* CHANGES TO WALL STRUCTURE, FOUNDATION TYPE, AND EXTERIOR ARE AVAILABLE AT AN ADDITIONAL COST

BUTCHER DRAFTING SERVICE, LLC



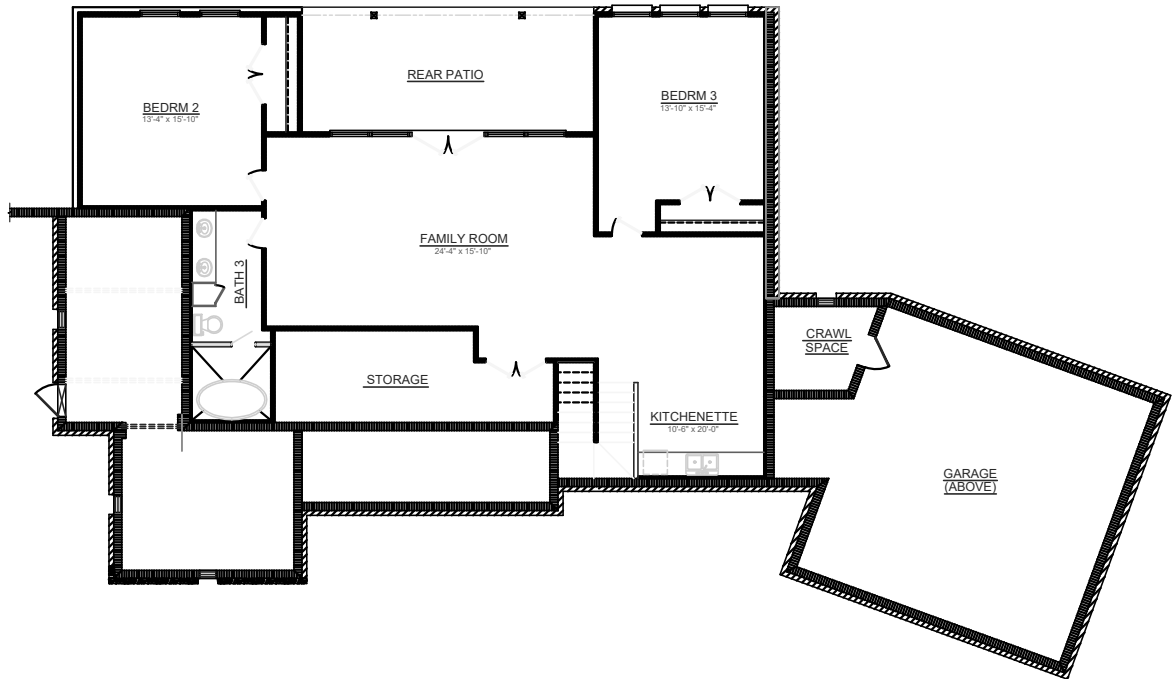
PLAN # BDS 20-38



BUTCHER DRAFTING SERVICE, LLC



PLAN # BDS 20-38



BUTCHER DRAFTING SERVICE, LLC