



PLAN # BDS 20-60



HOUSE PLAN SPECIFICATIONS				EXTRA DETAILS AND SPECIAL INFORMATION	
BEDROOMS:	4	FIRST FLOOR:	2,906	SUN ROOM , HUGE LOUNGE GRILL PORCH, PLAY RM, HUGE UNHEATED STORAGE, SHOP, MAIN 2 CAR FRONT SIDE ENTRY GARAGE. BSMT RIGHT SIDE ENTRY 1 CAR GARAGE	
BATHS:	3	SECOND FLOOR:	1,226		
STORIES :	2/BSMT	BASEMENT:	N/A		
GARAGE :	3 car	TOTAL HEATED SQFT:	4,132		
FINISH:	BRICK	TOTAL UNDER ROOF	7,414		
FOUNDATION:	SLAB	OVERALL DIMENSIONS:			
WALL STRUCTURE:	2 X 6	WIDTH:	60'-5"		
HOUSE STYLE:	FRENCH COUNTRY	DEPTH:	103'-10"		

* CHANGES TO WALL STRUCTURE, FOUNDATION TYPE, AND EXTERIOR ARE AVAILABLE AT AN ADDITIONAL COST

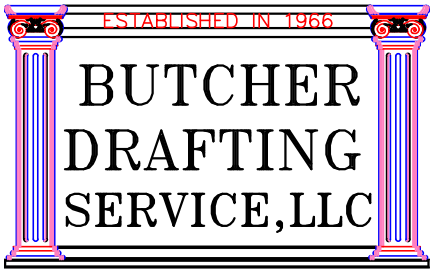
BUTCHER DRAFTING SERVICE, LLC



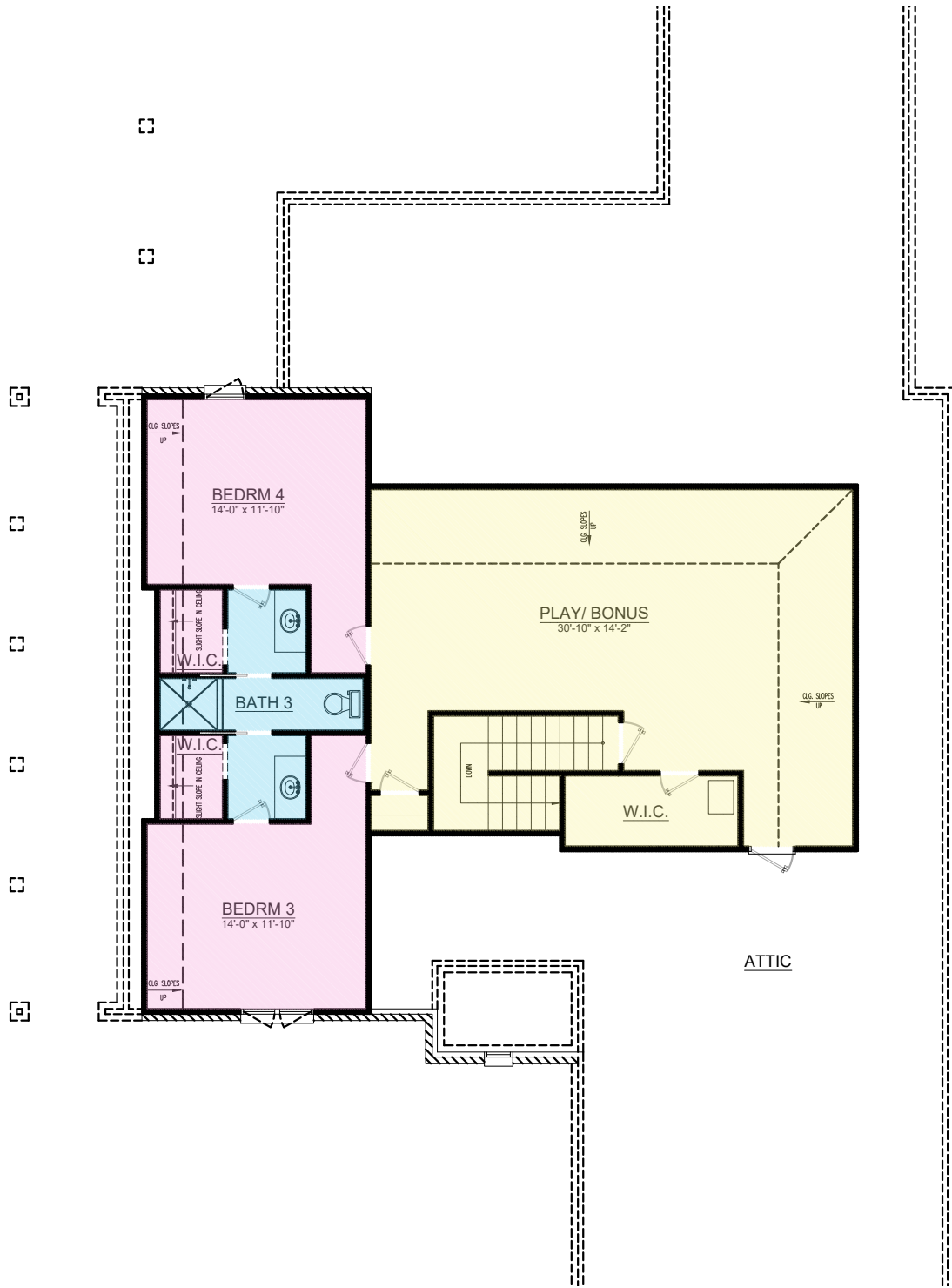
PLAN # BDS 20-60



BUTCHER DRAFTING SERVICE, LLC



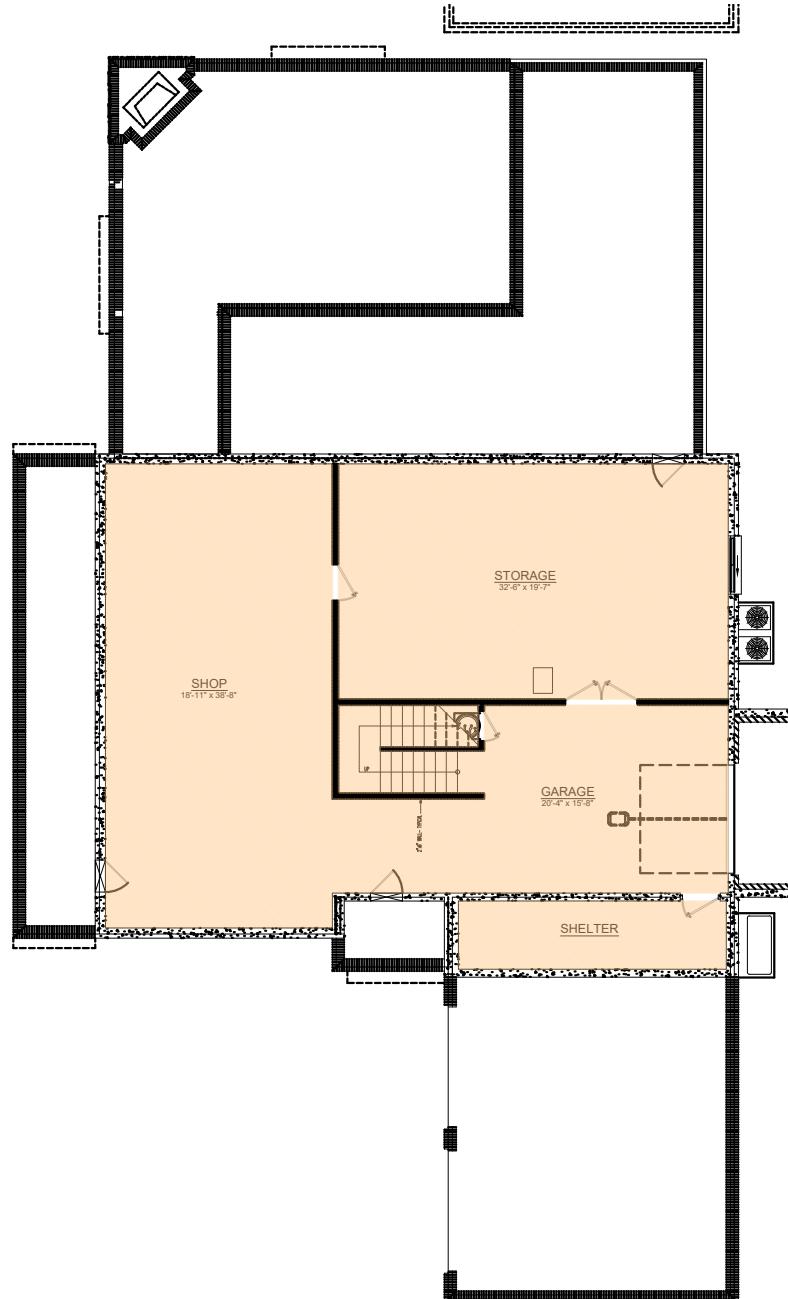
PLAN # BDS 20-60



BUTCHER DRAFTING SERVICE, LLC



PLAN # BDS 20-60



BUTCHER DRAFTING SERVICE, LLC