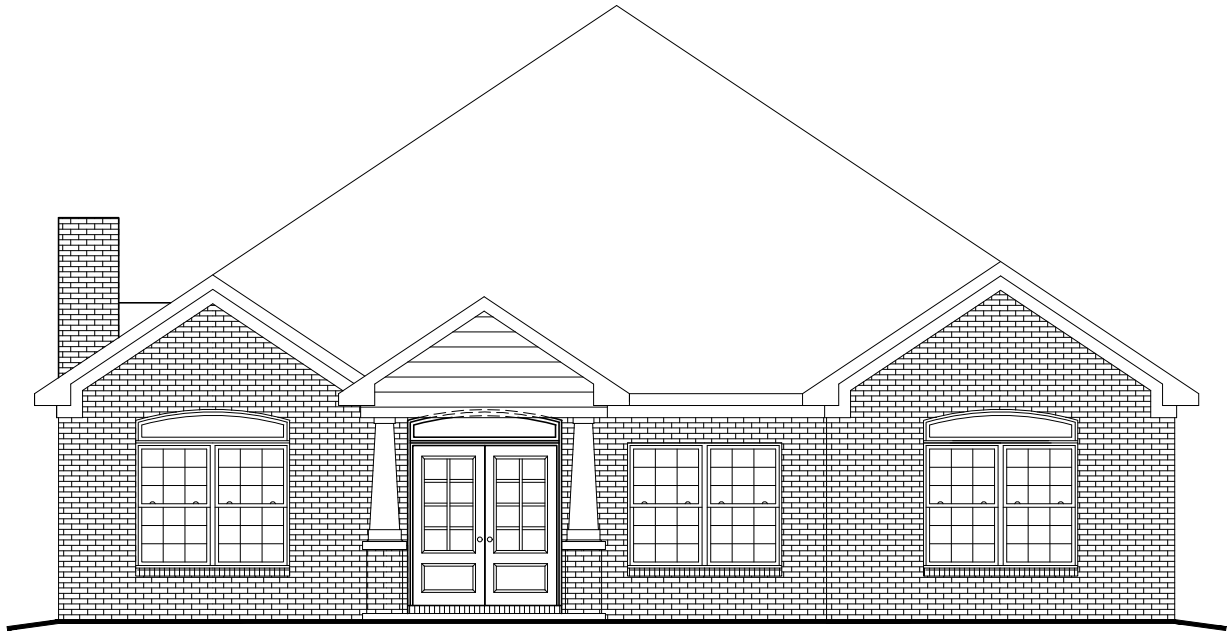




# PLAN # BDS 20-159



HOUSE PLAN SPECIFICATIONS				EXTRA DETAILS AND SPECIAL INFORMATION	
BEDROOMS:	3	FIRST FLOOR:	2,556	PRIMARY SUITE W/ LARGE W.I.C, STUDY, PANTRY, 3 CAR REAR SIDE ENTRY,	
BATHS:	2	SECOND FLOOR:	N/A		
STORIES :	1	BASEMENT:	N/A		
GARAGE :	3 car	TOTAL HEATED SQFT:	2,556		
FINISH:	BRICK	TOTAL UNDER ROOF	3,761		
FOUNDATION:	SLAB	OVERALL DIMENSIONS:			
WALL STRUCTURE:	2 X 4	WIDTH:	46'-6"		
HOUSE STYLE:	CRAFTSMAN	DEPTH:	95'-2"		

\* CHANGES TO WALL STRUCTURE, FOUNDATION TYPE, AND EXTERIOR ARE AVAILABLE AT AN ADDITIONAL COST

## BUTCHER DRAFTING SERVICE, LLC



# PLAN # BDS 20-159



BUTCHER DRAFTING SERVICE, LLC