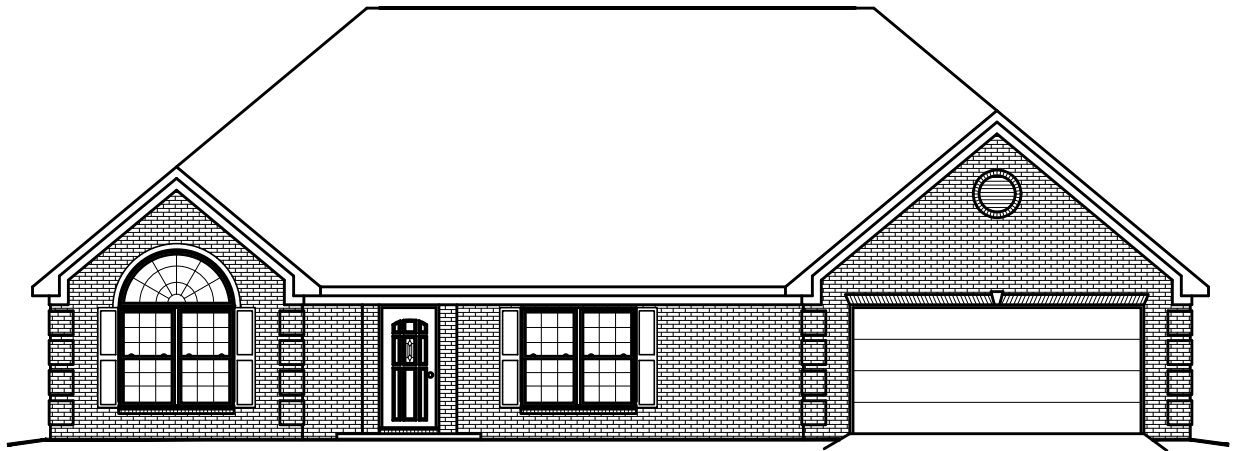




PLAN # BDS 20-213



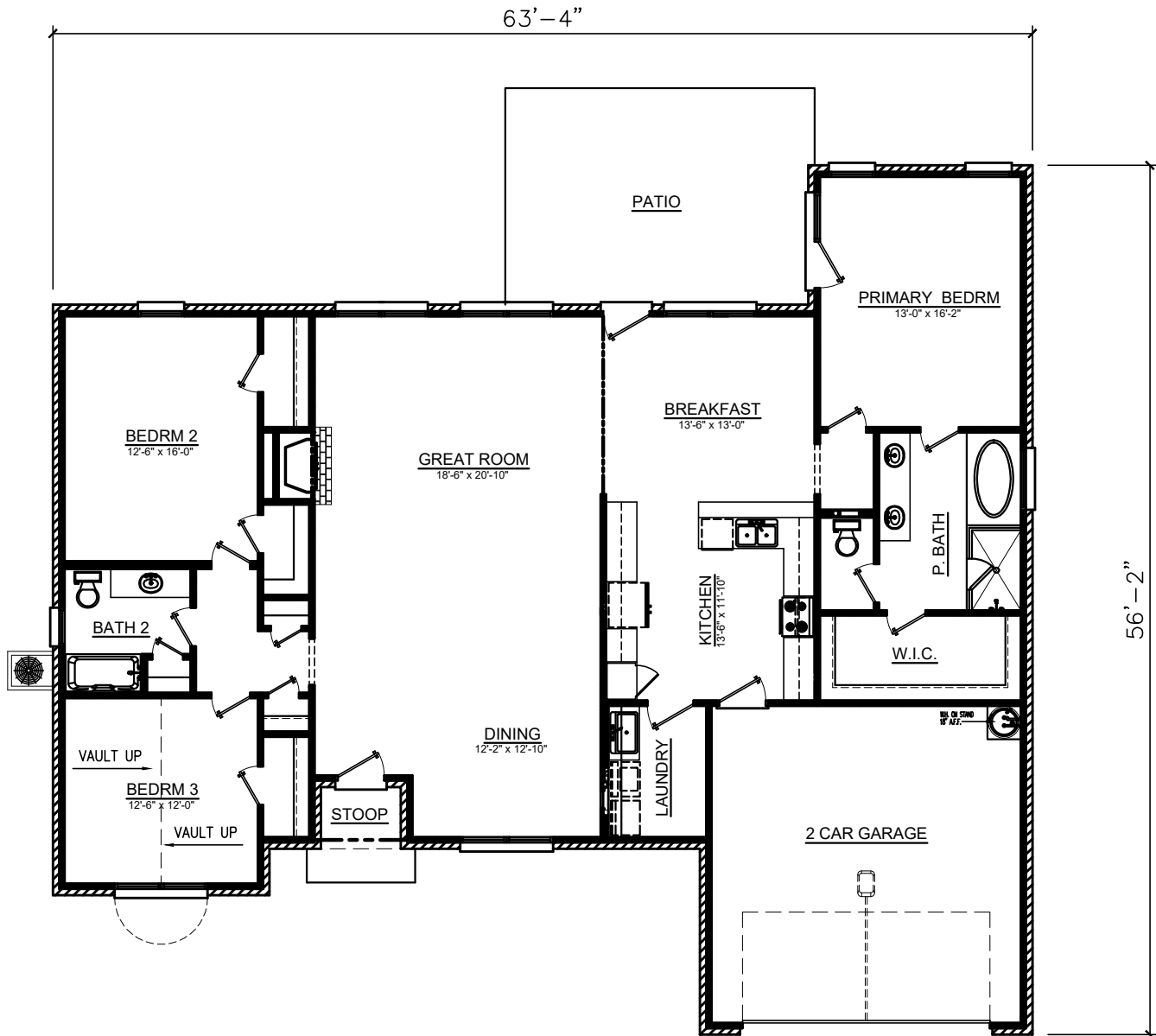
HOUSE PLAN SPECIFICATIONS				EXTRA DETAILS AND SPECIAL INFORMATION			
BEDROOMS:	3	FIRST FLOOR:	2,188	ISOLATED PRIMARY SUITE, 2 CAR FRONT ENTRY GARAGE, 2 CAR SIDE ENTRY GARAGE OPTION.			
BATHS:	2	SECOND FLOOR:	N/A				
STORIES :	1	BASEMENT:	N/A				
GARAGE :	2 car	TOTAL HEATED SQFT:	2,188				
FINISH:	BRICK	TOTAL UNDER ROOF	2,659				
FOUNDATION:	SLAB	OVERALL DIMENSIONS:					
WALL STRUCTURE:	2 X 4	WIDTH:	63'-4"				
HOUSE STYLE:	CRAFTSMAN	DEPTH:	56'-2"				

* CHANGES TO WALL STRUCTURE, FOUNDATION TYPE, AND EXTERIOR ARE AVAILABLE AT AN ADDITIONAL COST

BUTCHER DRAFTING SERVICE, LLC



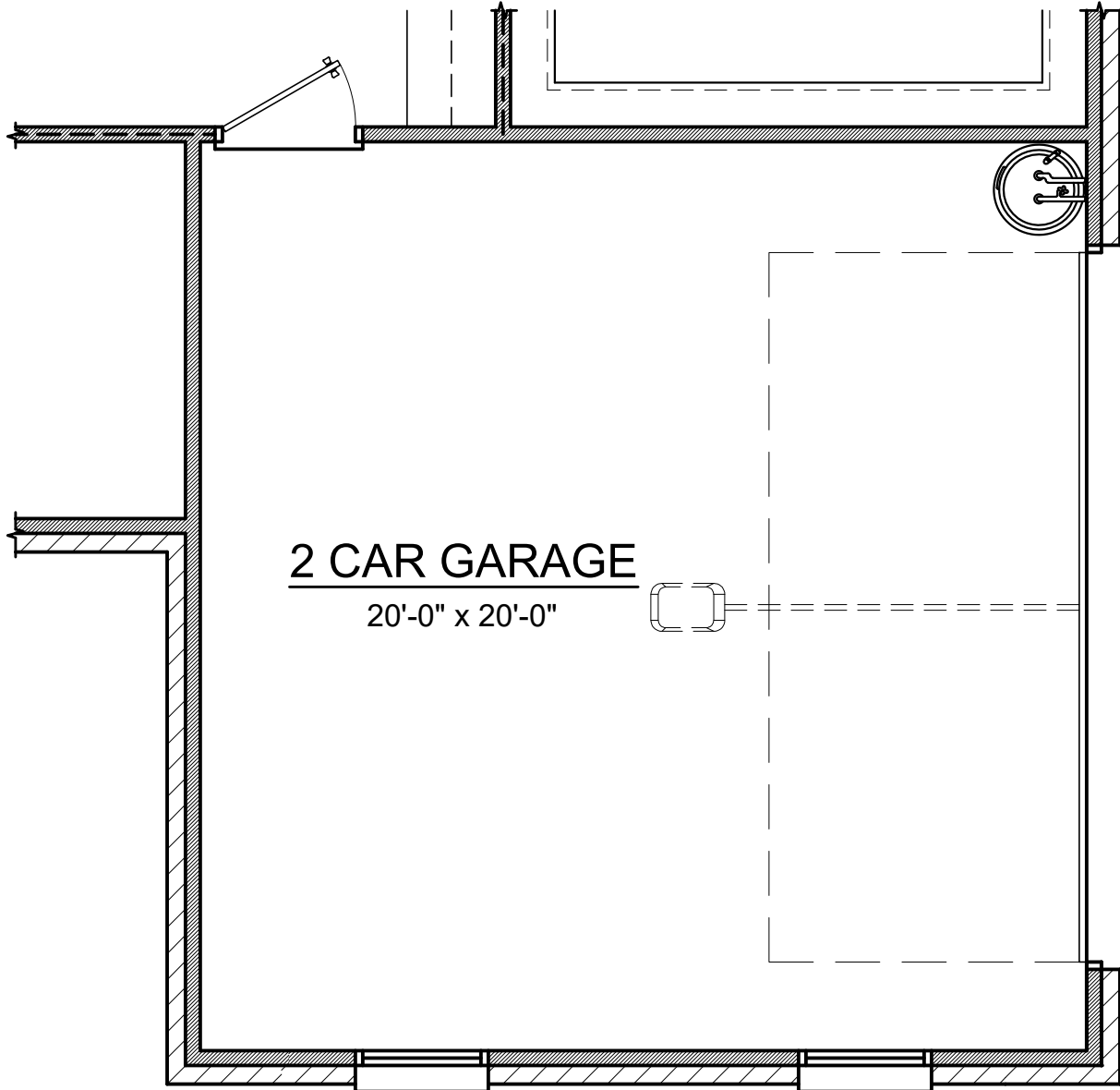
PLAN # BDS 20-213



BUTCHER DRAFTING SERVICE, LLC



PLAN # BDS 20-213



SIDE ENTRY GARAGE OPTION

BUTCHER DRAFTING SERVICE, LLC