

PLAN # BDS 20-215



HOUSE PLAN SPECIFICATIONS				EXTRA DETAILS AND SPECIAL INFORMATION	
BEDROOMS:	4	FIRST FLOOR:	1,860	OPEN FLOOR PLAN , WRAP AROUND PORCH	
BATHS:	3	SECOND FLOOR:	600		
STORIES :	2	BASEMENT:	N/A		
GARAGE :	N/A	TOTAL HEATED SQFT:	2,460		
FINISH:	VARIES	TOTAL UNDER ROOF	3,727		
FOUNDATION:	CRAWL	OVERALL DIMENSIONS:			
WALL STRUCTURE:	2 X 4	WIDTH:	60'-6"		
HOUSE STYLE:	COTTAGE	DEPTH:	51'-8"		

* CHANGES TO WALL STRUCTURE, FOUNDATION TYPE, AND EXTERIOR ARE AVAILABLE AT AN ADDITIONAL COST

BUTCHER DRAFTING SERVICE, LLC



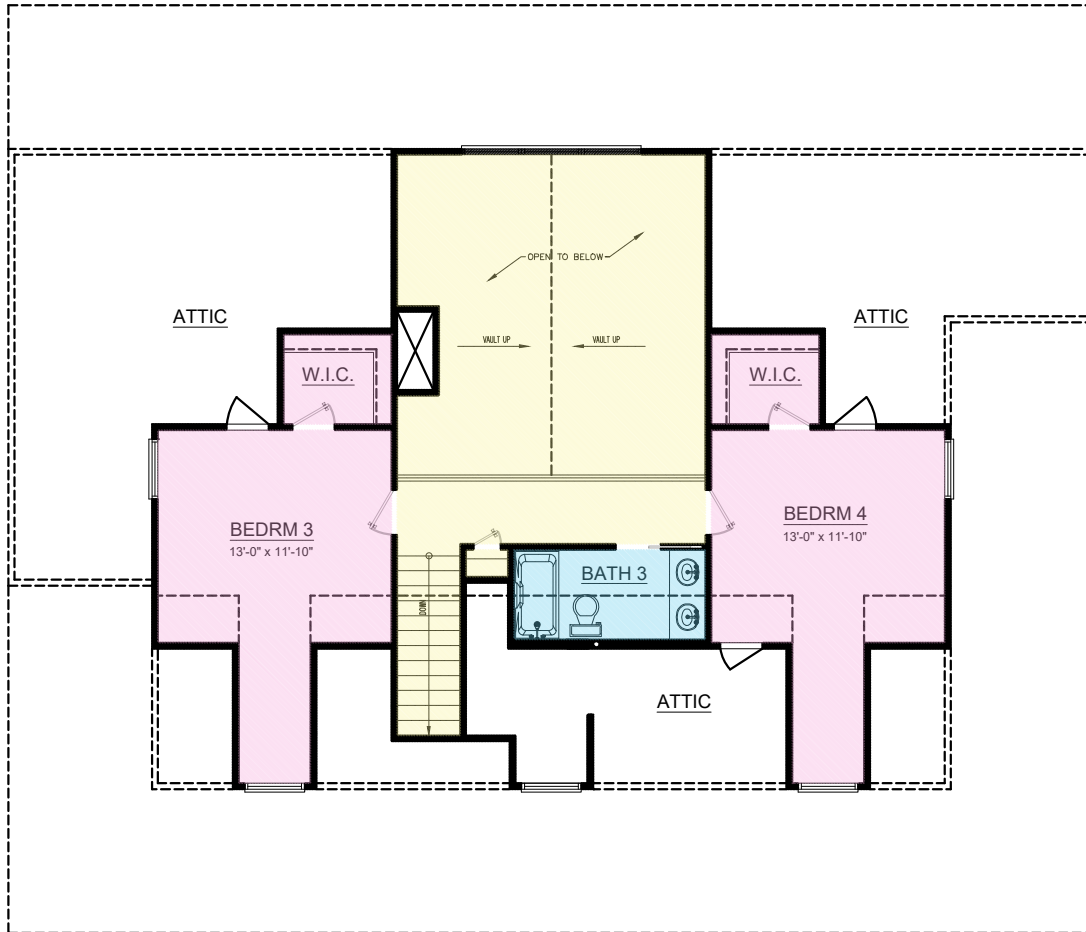
PLAN # BDS 20-215



BUTCHER DRAFTING SERVICE, LLC



PLAN # BDS 20-215



BUTCHER DRAFTING SERVICE, LLC