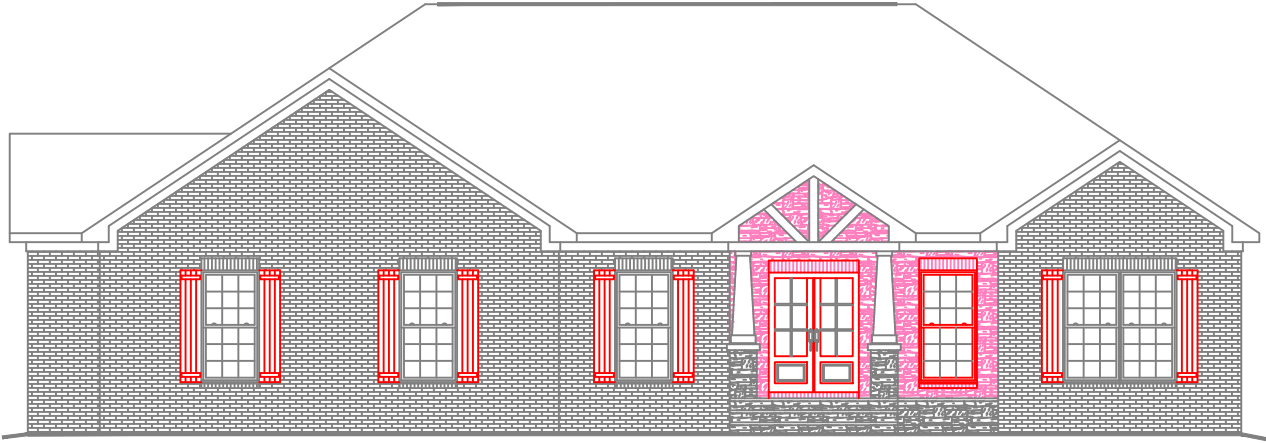


ESTABLISHED IN 1966

**BUTCHER
DRAFTING
SERVICE, LLC**

PLAN # 2793



HOUSE PLAN SPECIFICATIONS

GENERAL INFORMATION		SQUARE FOOTAGE CALCULATIONS		AVAILABLE FEATURES AND OPTIONS
BEDROOMS:	3	MAIN FLOOR:	2,413	REVERSED PLAN DIFFERENT FOUNDATION BASEMENT
BATHS:	3	SECOND FLOOR:	N/A	
STORIES:	1	BONUS SPACE:	N/A	
GARAGE:	4 CAR	BASEMENT:	612	LEGAL NOTES AND DISCLAIMERS THIS PLAN WAS DESIGNED USING BUILDING CODES AND STANDARDS OF THE ORIGINAL YEAR AND LOCATION IT WAS CREATED FOR. VERIFY WITH YOUR LOCAL PERMITTING DEPARTMENT FOR DRAWING REQUIREMENTS IF MODIFICATIONS ARE DEEMED NECESSARY IN ORDER TO MEET CURRENT AREA CODES AND/OR STANDARDS, THOSE MODIFICATIONS WILL BE SUBJECT TO AN ADDITIONAL HOURLY RATE. PLEASE CONTACT BUTCHER DRAFTING SERVICE, LLC. © FOR ADDITIONAL INFORMATION OR TO ARRANGE CHANGES TO BE MADE. ALL SALES INCLUDING MODIFICATIONS ARE FINAL. REFUNDS ARE NOT GIVEN ONCE SALE IS MADE.
FOUND. TYPE:	BASEMENT	TOTAL HEATED SQUARE FOOT: 3,025		
WALL STRUCTURE:	2 X 4	GARAGE: 879		
EXTERIOR DETAILS		BASEMENT: UNFINISHED 1,617		
EXTERIOR FINISH:	BRICK	FRONT & REAR PORCH: 411		
HOUSE STYLE:	CRAFTSMAN	TOTAL UNHEATED SQUARE FOOT: 2,907		
OVERALL DIMENSIONS		TOTAL UNDER ROOF: 5,320		
WIDTH:	66'-4"			
DEPTH:	49'-0"			

LEGEND

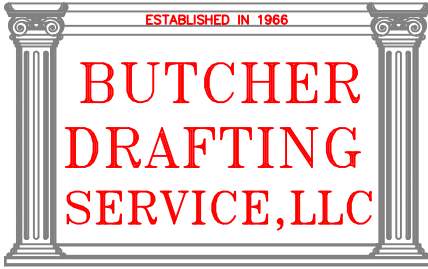
GENERAL LIVING SPACE

UNHEATED SPACE

BEDROOMS

BATHROOMS/ WET AREAS

BUTCHER DRAFTING SERVICE, LLC



PLAN # 2793



BUTCHER DRAFTING SERVICE, LLC

ESTABLISHED IN 1966

**BUTCHER
DRAFTING
SERVICE, LLC**

PLAN # 2793

