

ESTABLISHED IN 1966

BUTCHER
DRAFTING
SERVICE, LLC

PLAN # 2803



HOUSE PLAN SPECIFICATIONS

GENERAL INFORMATION		SQUARE FOOTAGE CALCULATIONS		AVAILABLE FEATURES AND OPTIONS
BEDROOMS:	3	MAIN FLOOR:	1,066	REVERSED PLAN DIFFERENT FOUNDATION BASEMENT
BATHS:	2.5	SECOND FLOOR:	388	
STORIES:	2	BONUS SPACE:	N/A	
GARAGE:	2 CAR	BASEMENT:	N/A	LEGAL NOTES AND DISCLAIMERS THIS PLAN WAS DESIGNED USING BUILDING CODES AND STANDARDS OF THE ORIGINAL YEAR AND LOCATION IT WAS CREATED FOR. VERIFY WITH YOUR LOCAL PERMITTING DEPARTMENT FOR DRAWING REQUIREMENTS IF MODIFICATIONS ARE DEEMED NECESSARY IN ORDER TO MEET CURRENT AREA CODES AND/OR STANDARDS, THOSE MODIFICATIONS WILL BE SUBJECT TO AN ADDITIONAL HOURLY RATE. PLEASE CONTACT BUTCHER DRAFTING SERVICE, LLC. © FOR ADDITIONAL INFORMATION OR TO ARRANGE CHANGES TO BE MADE. ALL SALES INCLUDING MODIFICATIONS ARE FINAL. REFUNDS ARE NOT GIVEN ONCE SALE IS MADE.
FOUND. TYPE:	CRAWL	TOTAL HEATED SQUARE FOOT:	1,454	
WALL STRUCTURE:	2 X 4	FRONT PORCH:	162	
EXTERIOR DETAILS		REAR PORCH:	384	
EXTERIOR FINISH:	VARIES	GARAGE:	775	
HOUSE STYLE:	FARMHOUSE	TOTAL UNHEATED SQUARE FOOT:	1,321	
OVERALL DIMENSIONS		TOTAL UNDER ROOF:	2,775	
WIDTH:	84'-6"			
DEPTH:	36'-0"			

LEGEND

GENERAL LIVING SPACE

UNHEATED SPACE

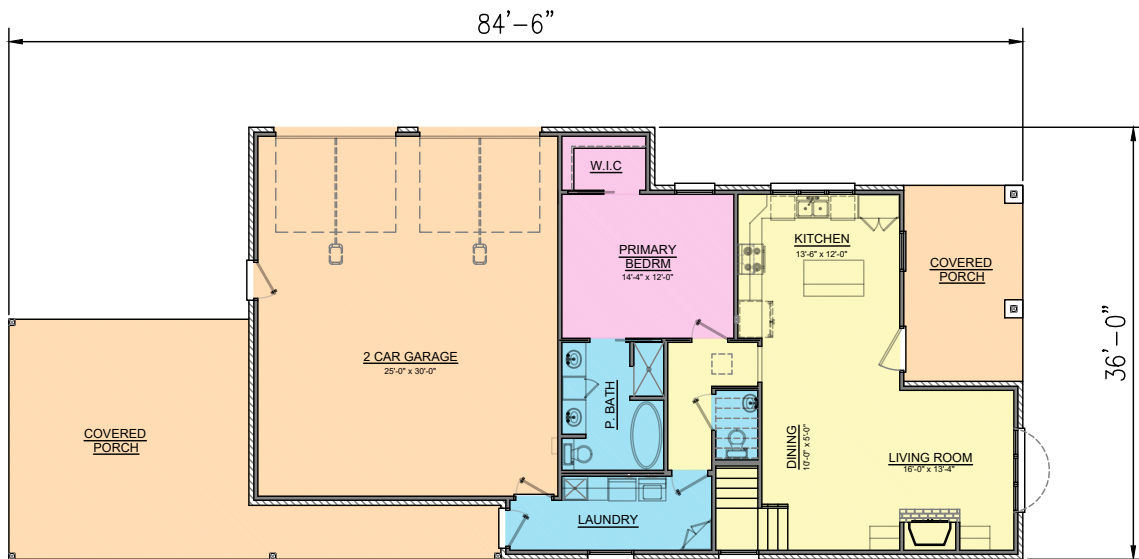
BEDROOMS

BATHROOMS/ WET AREAS

BUTCHER DRAFTING SERVICE, LLC



PLAN # 2803



BUTCHER DRAFTING SERVICE, LLC

ESTABLISHED IN 1966

BUTCHER
DRAFTING
SERVICE, LLC

PLAN # 2803

