



# PLAN # 2183



HOUSE PLAN SPECIFICATIONS					
GENERAL INFORMATION		SQUARE FOOTAGE CALCULATIONS		AVAILABLE FEATURES AND OPTIONS	
BEDROOMS:	3	MAIN FLOOR:	1,308	REVERSED PLAN	
BATHS:	2	SECOND FLOOR:	N/A	EXTERIOR FINISH	
STORIES:	1	BASEMENT:	N/A	BASEMENT	
GARAGE:	2 CAR	BONUS SPACE:	N/A	CRAWL / SLAB	
EXTERIOR DETAILS		TOTAL HEATED SQUARE FOOT: 1,308		LEGAL NOTES AND DISCLAIMERS	
EXTERIOR FINISH:	BRICK	GARAGE:	420	<p>THIS PLAN WAS DESIGNED USING BUILDING CODES AND STANDARDS OF THE ORIGINAL YEAR AND LOCATION IT WAS CREATED FOR. VERIFY WITH YOUR LOCAL PERMITTING DEPARTMENT FOR DRAWING REQUIREMENTS</p> <p>IF MODIFICATIONS ARE DEEMED NECESSARY IN ORDER TO MEET CURRENT AREA CODES AND/OR STANDARDS, THOSE MODIFICATIONS WILL BE SUBJECT TO AN ADDITIONAL HOURLY RATE.</p> <p>PLEASE CONTACT BUTCHER DRAFTING SERVICE, LLC. © FOR ADDITIONAL INFORMATION OR TO ARRANGE CHANGES TO BE MADE.</p> <p>ALL SALES INCLUDING MODIFICATIONS ARE FINAL. REFUNDS ARE NOT GIVEN ONCE SALE IS MADE.</p>	
FOUNDATION TYPE:	SLAB	FRONT PORCH/ STOOP:	20		
WALL FRAMING:	2x4	BACK PORCH/ PATIO:	172		
HOUSE STYLE:	CRAFTSMAN	BONUS (IF UNFINISHED):	N/A		
OVERALL DIMENSIONS		BASEMENT:	N/A		
WIDTH:	60'-8"	TOTAL UNHEATED SQUARE FOOT:	612		
DEPTH:	41'-0"	TOTAL UNDER ROOF:	1,920		

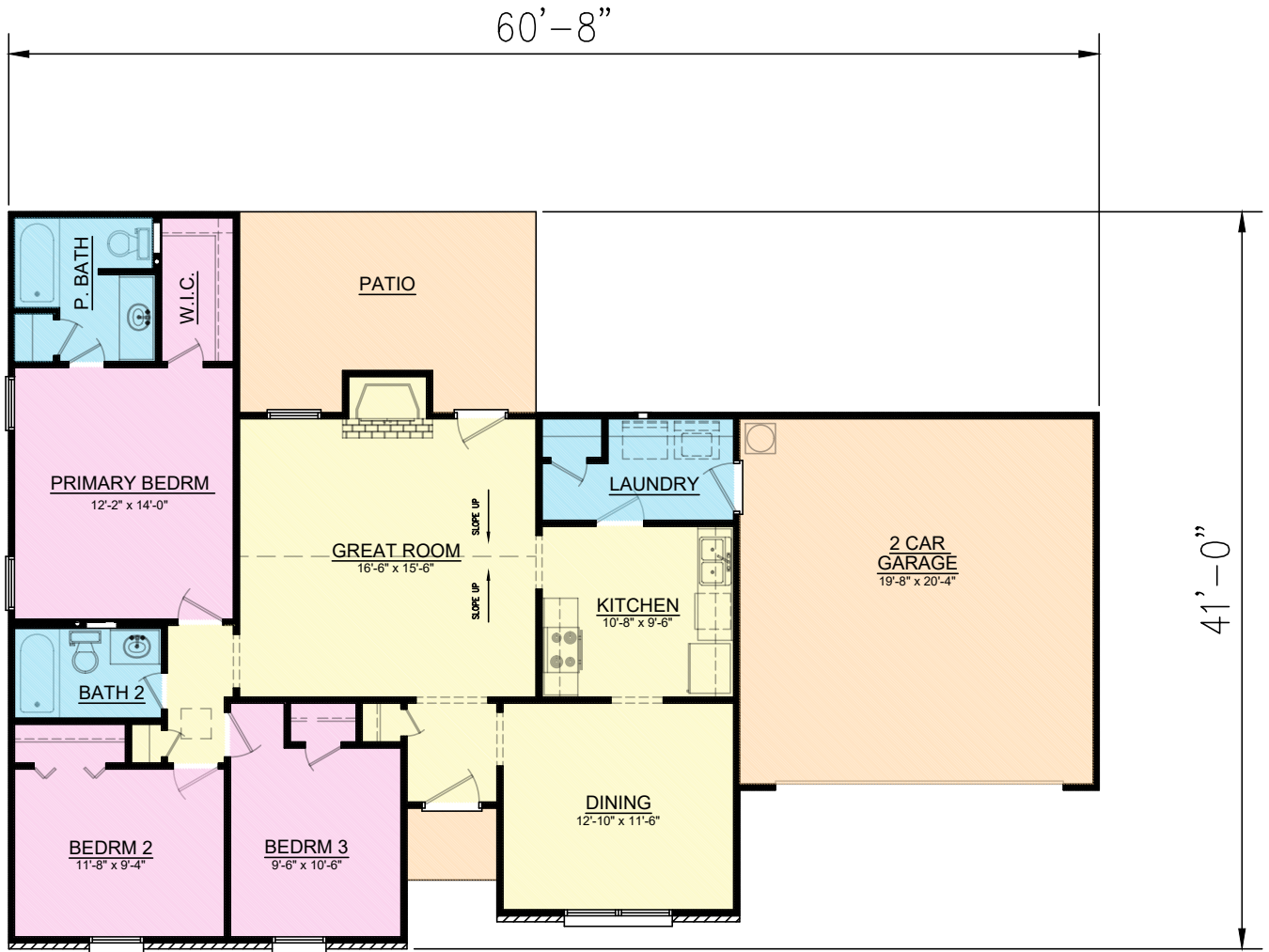
## LEGEND

GENERAL LIVING SPACE	UNHEATED SPACE	BEDROOMS	BATHROOMS/ WET AREAS
----------------------	----------------	----------	----------------------

## BUTCHER DRAFTING SERVICE, LLC



# PLAN # 2183



BUTCHER DRAFTING SERVICE, LLC