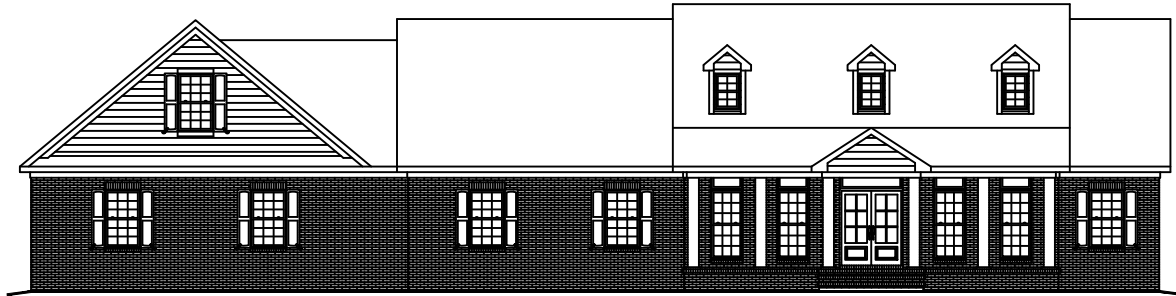




# PLAN # 2838



HOUSE PLAN SPECIFICATIONS					
GENERAL INFORMATION		SQUARE FOOTAGE CALCULATIONS		AVAILABLE FEATURES AND OPTIONS	
BEDROOMS:	3	MAIN FLOOR:	2,819	REVERSED PLAN	
BATHS:	2.5	SECOND FLOOR:	N/A	EXTERIOR FINISH	
STORIES:	2	BASEMENT:	N/A	BASEMENT	
GARAGE:	4 CAR	BONUS SPACE:	N/A	CRAWL / SLAB	
EXTERIOR DETAILS		TOTAL HEATED SQUARE FOOT:		LEGAL NOTES AND DISCLAIMERS	
EXTERIOR FINISH:	BRICK		2,819	<p>THIS PLAN WAS DESIGNED USING BUILDING CODES AND STANDARDS OF THE ORIGINAL YEAR AND LOCATION IT WAS CREATED FOR. VERIFY WITH YOUR LOCAL PERMITTING DEPARTMENT FOR DRAWING REQUIREMENTS</p> <p>IF MODIFICATIONS ARE DEEMED NECESSARY IN ORDER TO MEET CURRENT AREA CODES AND/OR STANDARDS, THOSE MODIFICATIONS WILL BE SUBJECT TO AN ADDITIONAL HOURLY RATE.</p> <p>PLEASE CONTACT BUTCHER DRAFTING SERVICE, LLC. © FOR ADDITIONAL INFORMATION OR TO ARRANGE CHANGES TO BE MADE.</p> <p>ALL SALES INCLUDING MODIFICATIONS ARE FINAL. REFUNDS ARE NOT GIVEN ONCE SALE IS MADE.</p>	
FOUNDATION TYPE:	BASEMENT	MAIN FLOOR GARAGE:	907		
WALL FRAMING:	2 X 6	BASEMENT GARAGE:	1,589		
HOUSE STYLE:	TRADITIONAL	BACK DECK:	247		
OVERALL DIMENSIONS		FRONT PORCH:	282		
WIDTH:	100'-11"	BASEMENT UNHEATED:	1,837		
DEPTH:	59'-1"	TOTAL UNHEATED SQUARE FOOT:	4,862		
		TOTAL UNDER ROOF:	7,681		

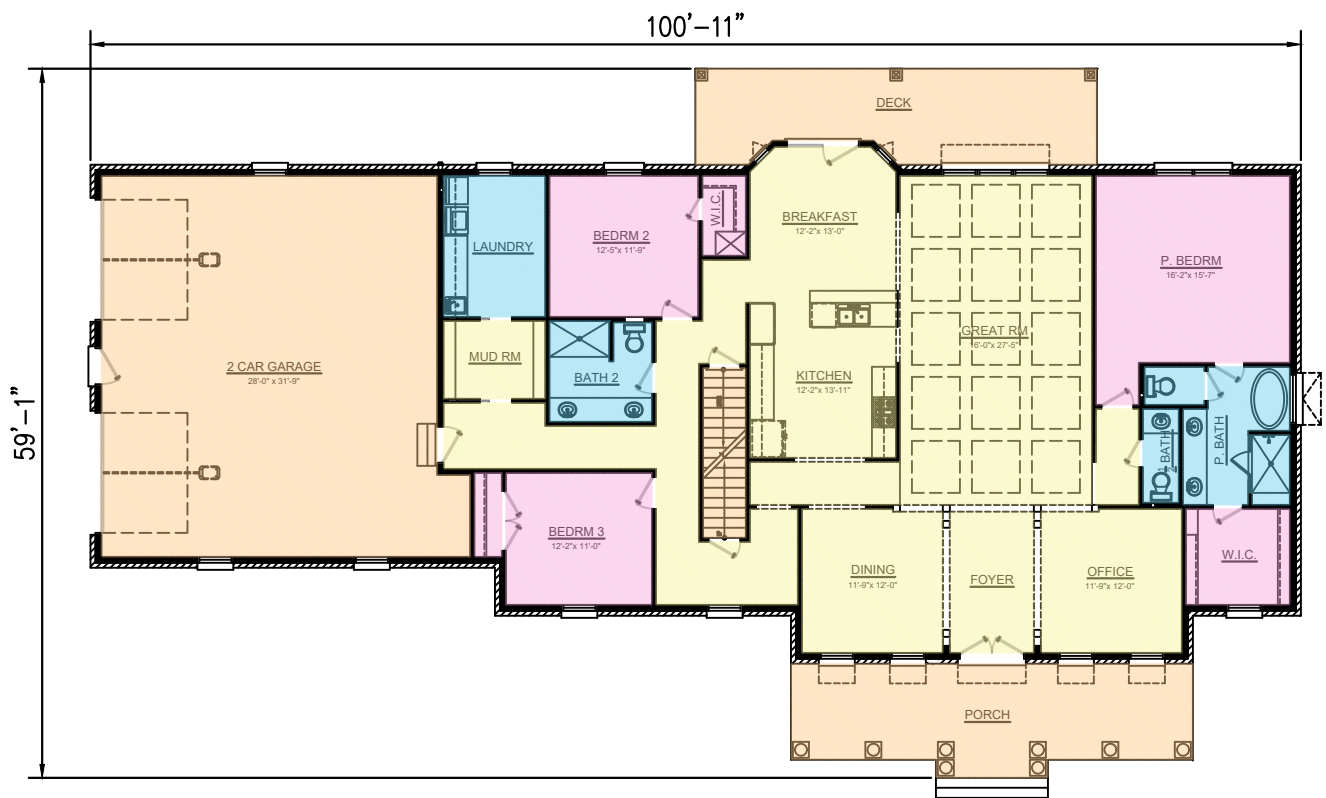
## LEGEND



## BUTCHER DRAFTING SERVICE, LLC



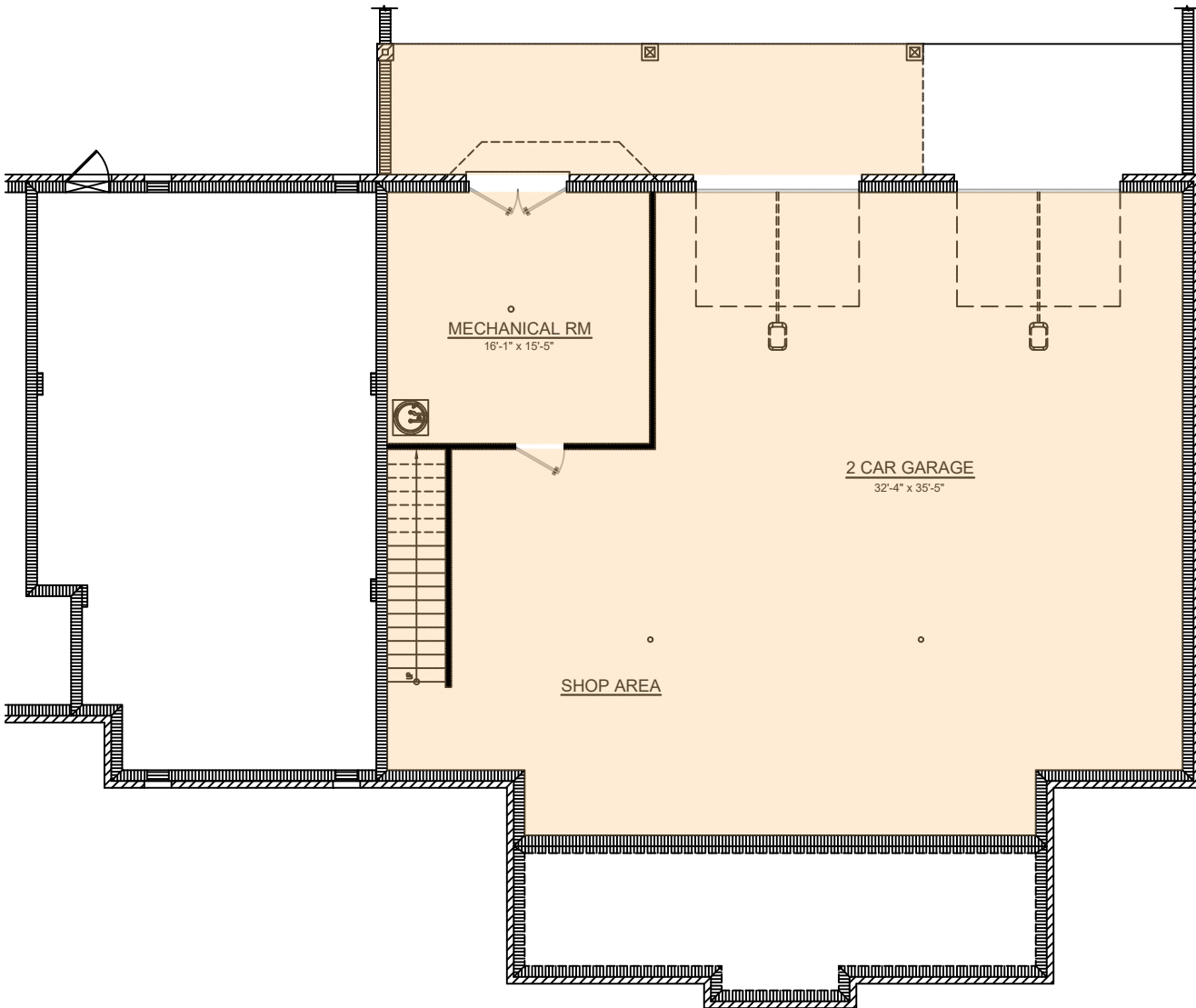
# PLAN # 2838



BUTCHER DRAFTING SERVICE, LLC



# PLAN # 2838



BUTCHER DRAFTING SERVICE, LLC